



# Planar CarbonLight VX Series

LED Video Wall & Floor

- ▶ *1.9 & 2.6mm pixel pitches*
- ▶ *HDR ready*
- ▶ *Compatible with Brompton & Colorlight*
- ▶ *Hang, wall mount or free stand*



Planar<sup>®</sup> CarbonLight<sup>™</sup> VX Series is comprised of carbon fiber-framed indoor LED video wall and flooring displays with exceptional on-camera and in-camera visual properties and deployment versatility for a variety of installations, including virtual production and extended reality. Its wide color spectrum, narrow pixel pitches and fast frame and refresh rates deliver excellent in-frame and in-person visual performance.

---

## Lights, Camera, Action!

Planar CarbonLight VX Series' visual and mechanical properties are conducive to cinema and broadcasting as in-camera background scenes. The displays beautifully supplement green screens and integrate with VP/XR volumes.

Average in-person viewers can feel comfortable viewing the video wall from as close as 10 ft. without seeing individual pixels, while those seeing it in media will feel enveloped in the scene as if they were on location.





## Wide Color Gamut

The displays facilitate precise color adjustment to fine tune colors, correct dark scenes and enhance imagery with a larger percentage of the visible color spectrum. They support on-camera video applications requiring wider color gamut, including Rec. 709 and DCI-P3.



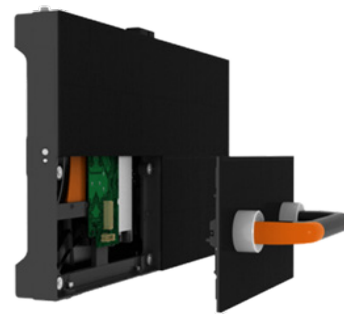
## HDR Ready

Displays are ready for High Dynamic Range content with support for both HDR10 and the less common HLG formats. They maximize the image quality of each pixel for brighter whites, darker blacks and more true-to-life colors.



## Camera Ready

Planar CarbonLight VX Series has advanced Genlock capabilities to ensure it can synchronize with a variety of cameras. Models are compatible with typical frame rates between 23.5Hz and 152Hz, and frame multiplication, virtually eliminating common video recording challenges.



## Easy Access

Individual LED cabinets can be removed and installed anywhere within the video wall or floor without disrupting the overall layout, while front-side, or top-side, service makes module extraction simple for maintenance.

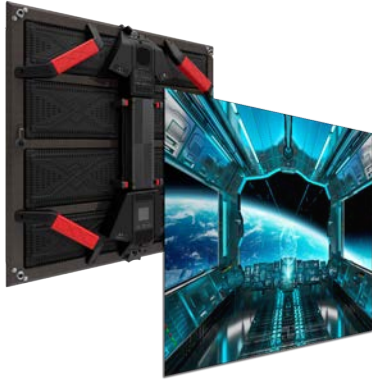
## Processing Prowess

Planar CarbonLight CLI VX Series has the essential features broadcast and film production companies require for today's on-camera display needs. It is compatible with multiple video controller processing options from Brompton Technology® and Colorlight.

### Benefits and functions include:

- *Exceptionally Accurate Color*
- *High Dynamic Range*
- *Smooth Motion with Low Latency*
- *Frame Remapping*
- *Grayscale Trimming*





## Planar CarbonLight CLI VX Series

### Indoor LED Video Walls

Planar® CarbonLight™ CLI VX Series features narrow 1.9 or 2.6mm pixel pitch, shortening the distance a camera needs to avoid moiré effect and other artifacts. The thin, carbon fiber-framed 500x500mm displays can be hung, wall mounted or free stand. They have beveled edges to support 90° corners and can facet for curved walls.

Planar CarbonLight bracketry enables quick assembly and teardown for fast-paced applications.



## Planar CarbonLight CLF VX Series

### Indoor LED Flooring

Planar® CarbonLight™ CLF VX Series features 2.6mm pixel pitch, one of the finest in the industry for an LED floor. The square (500x500mm), thin, flooring panels feature carbon fiber frames, making them lightweight. They sit on ground rails, and have layered wear-proof masking that can support up to 1,102lbs per display, facilitating heavy loads. This is particularly valuable for production studios that may need set change flexibility and heavy props.

## Planar Studios

Planar CarbonLight VX Series LED video walls and floor are the cornerstones of the Planar Studios initiative, an effort to accelerate Virtual Production and Extended Reality (VP+XR) capabilities and make them more accessible, streamlined and repeatable. Planar Studios empowers visual storytellers to bring their creative visions to life with key technology partnerships, dedicated expert teams, and advanced on-camera display solutions.

Planar Studios is aligned with top creative and technical experts in VP+XR specializing in areas that include motion tracking, digital production and imaginative visual storytelling. These collaborative partnerships integrate the products, organizations and people that creative producers need to create realistic, on-screen content in today's VP+XR settings.

### Applications:

- *Virtual Production*
- *XR Stages & Studios*
- *Live Events*
- *Broadcasting*
- *Corporate*
- *Education & Training*



# Specifications

Planar CarbonLight CLIVX	CLIVX1.9	CLIVX1.9 B	CLIVX2.6	CLIVX2.6 B
<b>Pixel Pitch</b>	1.95mm		2.6mm	
<b>Cabinet Resolution</b>	256 x 256		192 x 192	
<b>Cabinet Size (W x H x D)</b>	500 x 500 x 63mm   19.69 x 19.69 x 2.48in			
<b>Power Consumption, Max (watts)</b>	225/Cabinet   900/m <sup>2</sup>			
<b>Power Consumption, Typical (watts)</b>	150/Cabinet   300/m <sup>2</sup>			
<b>Line Voltage</b>	100-240V AC, 50/60Hz			
<b>Cabinet Weight (per display)</b>	4.1kg   9.04lbs			
<b>Brightness (cd/m<sup>2</sup>)</b>	1,500			
<b>LED Refresh Rate</b>	3840Hz			
<b>Scan Ratio</b>	1:8		1:16	
<b>Frame Rate (processor dependent)</b>	23.5 - 152Hz		24 - 144Hz	
<b>Color Temperature, Adjustable (k)</b>	3,000-10,000 adjustable			
<b>Viewing Angles</b>	140° Horizontal, 140° Vertical			
<b>Installation and Service Access</b>	Front (modules), Rear			
<b>Gray Scale Processing</b>	16bit			
<b>Power Supply</b>	Single			
<b>Operating Temperature/Humidity (degrees F/C, relative humidity)</b>	-20° to 40° C   -4° to 104° F, 10-80%			
<b>Storage Temperature/Humidity (degrees F/C, relative humidity)</b>	-35° to 60° C   -31° to 140° F, 10-80%			
<b>LED Lifetime, Typical</b>	100,000 hours			

Planar CarbonLight CLF VX	CLF VX2.6	CLF VX2.6 B
<b>Pixel Pitch</b>	2.6mm	
<b>Cabinet Resolution</b>	192 x 192	
<b>Cabinet Size (W x H x D)</b>	500 x 500 x 80mm   19.69 x 19.69 x 3.15in	
<b>Power Consumption, Max (watts)</b>	150/Cabinet   600/m <sup>2</sup>	
<b>Power Consumption, Typical (watts)</b>	50/Cabinet   200/m <sup>2</sup>	
<b>Line Voltage</b>	100-240V AC, 50/60Hz	
<b>Cabinet Weight (per display)</b>	8kg   17.6lbs	
<b>Brightness (cd/m<sup>2</sup>)</b>	500	
<b>LED Refresh Rate</b>	3840Hz	
<b>Frame Rate (processor dependent)</b>	24 - 144Hz	
<b>Color Temperature, Adjustable (k)</b>	3,000-9,000 adjustable	
<b>Viewing Angles</b>	140° Horizontal, 140° Vertical	
<b>Installation and Service Access</b>	Front (top)	
<b>Gray Scale Processing</b>	16bit	
<b>Weight Bearing Capacity (per panel)</b>	500kg   1,102lbs	
<b>Power Supply</b>	Dual	
<b>Operating Temperature/Humidity (degrees F/C, relative humidity)</b>	-20° to 40° C   -4° to 104° F, 10-80%	
<b>Storage Temperature/Humidity (degrees F/C, relative humidity)</b>	-35° to 60° C   -31° to 140° F, 10-80%	
<b>LED Lifetime, Typical</b>	100,000 hours	

For more information visit: [www.planar.com/carbonlight-vx](http://www.planar.com/carbonlight-vx)

Planar is a trademark of Planar Systems, Inc. All other trademarks and service marks are property of their holders. Copyright © 2023 Planar Systems, Inc. All rights reserved. This document may not be copied in any form without permission from Planar. Information in this document is subject to change without notice. 3/2023