

REVISION HISTORY					
ECO	SHEET	REV.	DESCRIPTION	DATE	APPR'D
		A	INITIAL RELEASE	5/3/2023	EJS



PLANAR SYSTEMS, INC.
1195 NE COMPTON DRIVE
HILLSBORO, OR 97006 USA

THIS DRAWING CONTAINS INFORMATION PROPRIETARY TO PLANAR SYSTEMS, INC. ANY REPRODUCTION IN PART OR WHOLE WITHOUT THE WRITTEN PERMISSION OF PLANAR SYSTEMS IS PROHIBITED. THIS DRAWING IS SUPPLIED FOR INFORMATION, IDENTIFICATION, ENGINEERING, EVALUATION, AND/OR INSPECTION PURPOSES ONLY AND MAY NOT BE USED AS BASIS FOR THE MANUFACTURING OF PRODUCTS OR THE DESIGN OF ANY PARTS OR SUBASSEMBLY PARTS OR TO ANY THIRD PARTY, UNLESS AUTHORIZED IN WRITING BY PLANAR SYSTEMS.



PRODUCT
**DirectLight® Pro™ Series LED
Product Overview**

PART NO.

-

SHEET TITLE
**DIRECTLIGHT PRO
OUTLINE**

UNLESS OTHERWISE SPECIFIED DIMENSIONS ARE IN MILLIMETERS (INCHES).

DRAWN BY

DRAWN DATE

SHEET
1 OF 16

SHEET SIZE REVISION
B A

1. SPECIFICATIONS SUBJECT TO CHANGE WITHOUT NOTICE

NOTES: UNLESS OTHERWISE SPECIFIED.

DRAWING KEY

ON-PAGE CONNECTION



OFF-PAGE CONNECTION



INPUT ARROW



OUTPUT ARROW



SIGNAL/POWER LOOP INPUT



SIGNAL/POWER LOOP END



Sheet List Table

Sheet Number	Sheet Title
1	COVER PAGE
2	KEY & INDEX
3	DLPRO OVERVIEW - PAGE 1
4	DLPRO OVERVIEW - PAGE 2
5	DLPRO MODULE OVERVIEW
6	DLPRO MIXED CHASSIS FRONT INSTALL
7	DLPRO MIXED CHASSIS REAR INSTALL
8	DLPRO 36" FRONT INSTALL
9	DLPRO 36" REAR INSTALL
10	DLPRO MOUNTING ACCESSORIES
11	DLPRO 5X3 UNIT WALL MOUNTING
12	DLPRO 8X4 UNIT WALL MOUNTING
13	DLPRO 5X10 UNIT WALL MOUNTING
14	DLPRO TRIM
15	DLPRO TOUCH
16	DLPRO OUTSIDE CORNER INSTALL



PLANAR SYSTEMS, INC.
1195 NE COMPTON DRIVE
HILLSBORO, OR 97006 USA

THIS DRAWING CONTAINS INFORMATION PROPRIETARY TO PLANAR SYSTEMS, INC. ANY REPRODUCTION IN PART OR WHOLE WITHOUT THE WRITTEN PERMISSION OF PLANAR SYSTEMS IS PROHIBITED. THIS DRAWING IS SUPPLIED FOR INFORMATION, IDENTIFICATION, ENGINEERING, EVALUATION, AND/OR INSPECTION PURPOSES ONLY AND MAY NOT BE USED AS BASIS FOR THE MANUFACTURING OF PRODUCTS OR THE DESIGN OF ANY THIRD PARTY PRODUCTS UNLESS AUTHORIZED IN WRITING BY PLANAR SYSTEMS.

PRODUCT
**DirectLight® Pro™ Series LED
Product Overview**

PART NO.

-

SHEET TITLE
KEY & INDEX

UNLESS OTHERWISE SPECIFIED DIMENSIONS ARE IN MILLIMETERS (INCHES).

DRAWN BY

DRAWN DATE

SHEET
2 OF 16

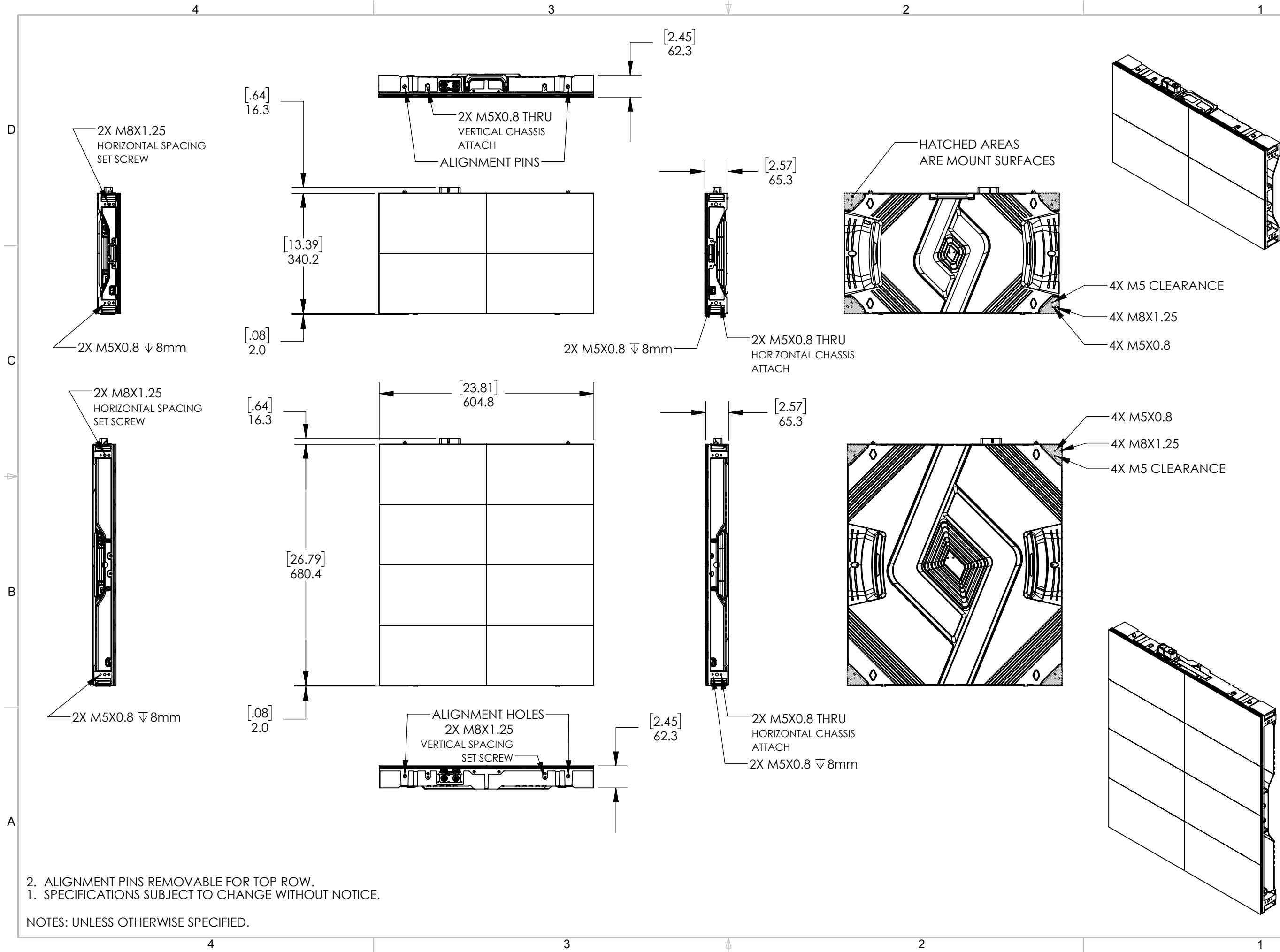
SHEET SIZE REVISION

B

A

1. SPECIFICATIONS SUBJECT TO CHANGE WITHOUT NOTICE

NOTES: UNLESS OTHERWISE SPECIFIED.



THIS DRAWING CONTAINS INFORMATION PROPRIETARY TO PLANAR SYSTEMS, INC. ANY REPRODUCTION IN PART OR WHOLE WITHOUT THE WRITTEN PERMISSION OF PLANAR SYSTEMS IS PROHIBITED. THIS DRAWING IS SUPPLIED FOR INFORMATION, IDENTIFICATION, ENGINEERING, EVALUATION, AND/OR INSPECTION PURPOSES ONLY AND MAY NOT BE USED AS BASIS FOR THE MANUFACTURING OF PRODUCTS OR THE DESIGN OF ANY THIRD PARTY UNLESS AUTHORIZED IN WRITING BY PLANAR SYSTEMS.

PRODUCT
DirectLight® Pro™ Series LED
Product Overview

SHEET TITLE
DLPRO OVERVIEW -
PAGE 1

DRAWN BY

DRAWN DATE

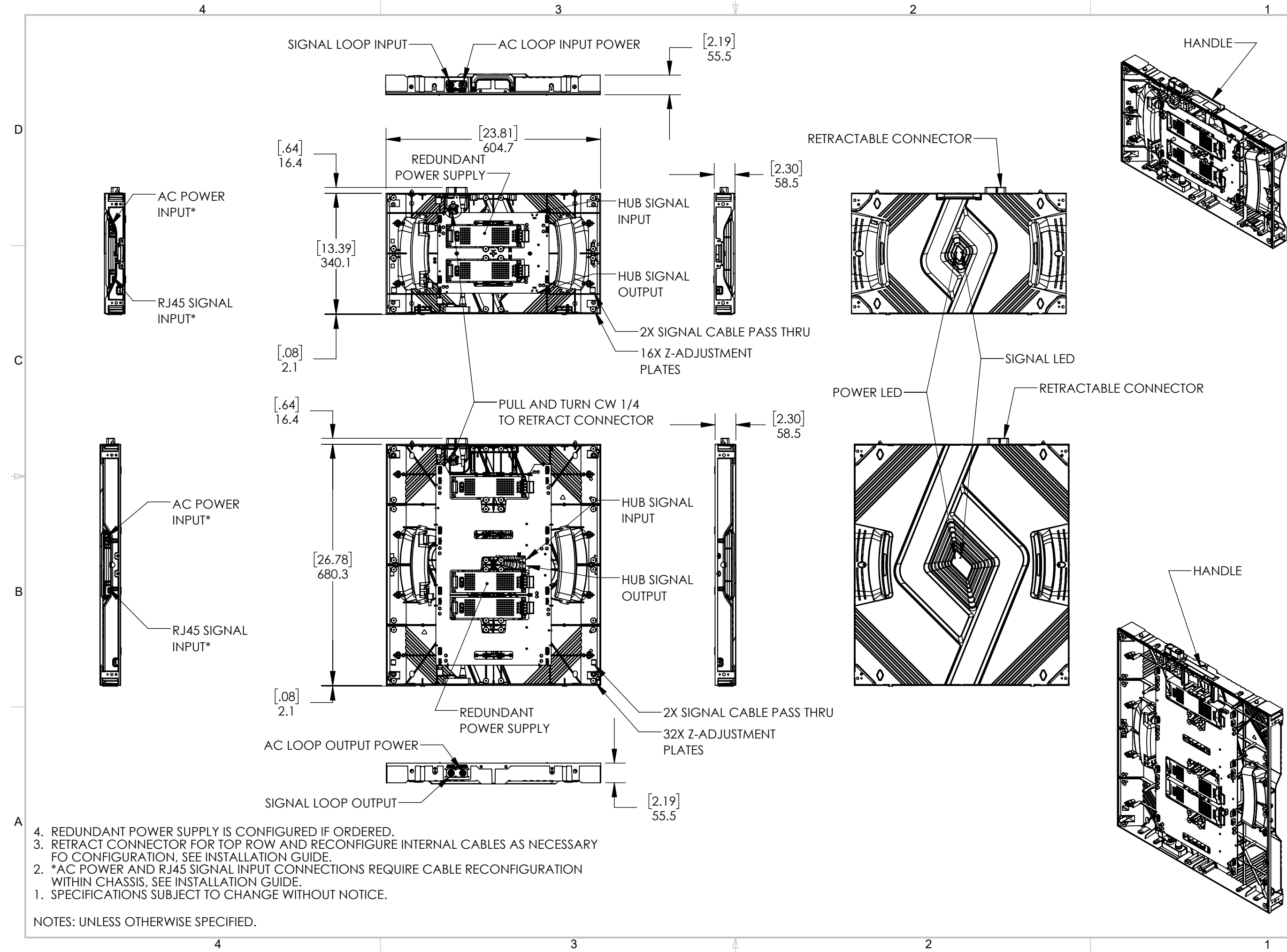
SHEET
3 OF 16

SHEET SIZE REVISION
B A

PART NO.
 -

UNLESS OTHERWISE SPECIFIED DIMENSIONS ARE IN MILLIMETERS (INCHES).

2. ALIGNMENT PINS REMOVABLE FOR TOP ROW.
 1. SPECIFICATIONS SUBJECT TO CHANGE WITHOUT NOTICE.
 NOTES: UNLESS OTHERWISE SPECIFIED.



4. REDUNDANT POWER SUPPLY IS CONFIGURED IF ORDERED.
3. RETRACT CONNECTOR FOR TOP ROW AND RECONFIGURE INTERNAL CABLES AS NECESSARY FOR CONFIGURATION, SEE INSTALLATION GUIDE.
2. *AC POWER AND RJ45 SIGNAL INPUT CONNECTIONS REQUIRE CABLE RECONFIGURATION WITHIN CHASSIS, SEE INSTALLATION GUIDE.
1. SPECIFICATIONS SUBJECT TO CHANGE WITHOUT NOTICE.

NOTES: UNLESS OTHERWISE SPECIFIED.

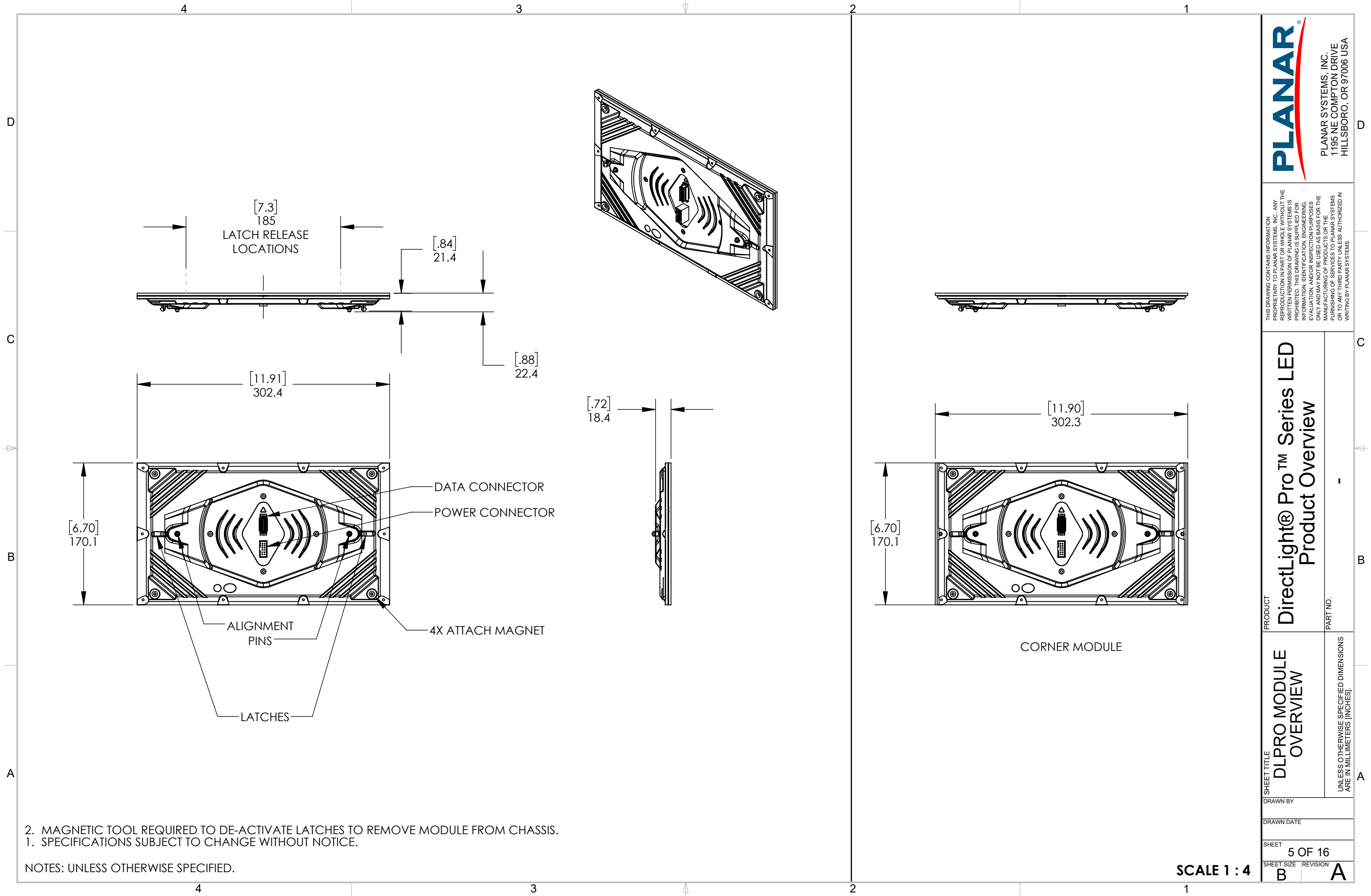
THIS DRAWING CONTAINS INFORMATION PROPRIETARY TO PLANAR SYSTEMS, INC. ANY REPRODUCTION IN PART OR WHOLE WITHOUT THE WRITTEN PERMISSION OF PLANAR SYSTEMS IS PROHIBITED. THIS DRAWING IS SUPPLIED FOR INFORMATION, IDENTIFICATION, ENGINEERING, EVALUATION, AND/OR INSPECTION PURPOSES ONLY AND MAY NOT BE USED AS BASIS FOR THE MANUFACTURING OF PRODUCTS OR THE DESIGN OF ANY THIRD PARTY UNLESS AUTHORIZED IN WRITING BY PLANAR SYSTEMS.

PRODUCT
DirectLight® Pro™ Series LED
 Product Overview

SHEET TITLE
DLPRO OVERVIEW - PAGE 2

DRAWN BY
 DRAWN DATE
 SHEET
4 OF 16
 SHEET SIZE REVISION
B A

PART NO.
 UNLESS OTHERWISE SPECIFIED DIMENSIONS ARE IN MILLIMETERS (INCHES).



2. MAGNETIC TOOL REQUIRED TO DE-ACTIVATE LATCHES TO REMOVE MODULE FROM CHASSIS.
 1. SPECIFICATIONS SUBJECT TO CHANGE WITHOUT NOTICE.

NOTES: UNLESS OTHERWISE SPECIFIED.

SCALE 1 : 4

PLANAR
 PLANAR SYSTEMS, INC.
 1195 NE COMPTON DRIVE
 HILLSBORO, OR 97006 USA

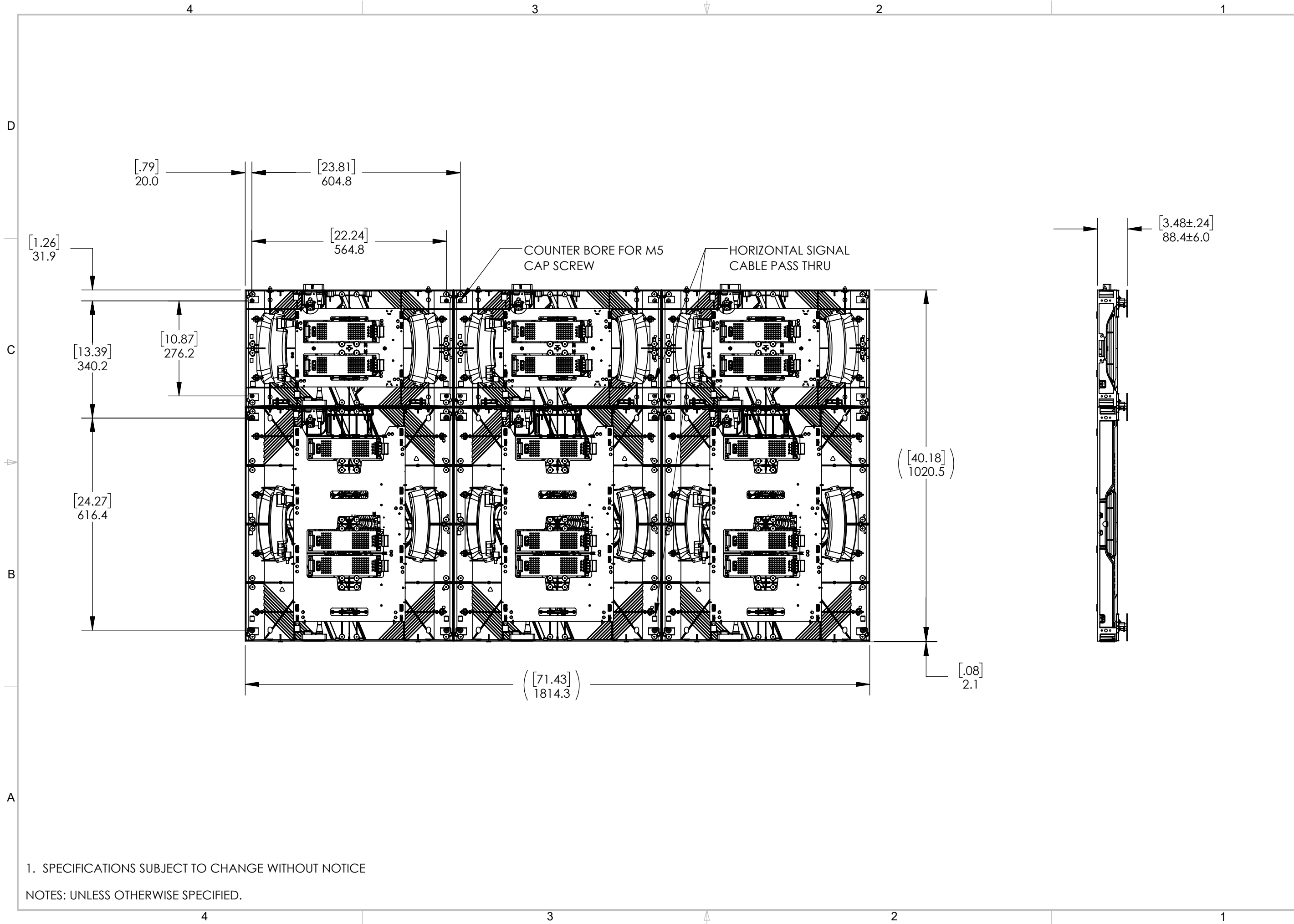
THIS DRAWING CONTAINS INFORMATION PROPRIETARY TO PLANAR SYSTEMS, INC. ANY REPRODUCTION IN PART OR WHOLE WITHOUT THE WRITTEN PERMISSION OF PLANAR SYSTEMS IS PROHIBITED. THIS DRAWING IS SUPPLIED FOR INFORMATION, IDENTIFICATION, ENGINEERING, EVALUATION, AND/OR INSPECTION PURPOSES ONLY AND MAY NOT BE USED AS BASIS FOR THE MANUFACTURING OF PRODUCTS OR THE DESIGN OF ANY THIRD PARTY UNLESS AUTHORIZED IN WRITING BY PLANAR SYSTEMS.

PRODUCT
DirectLight® Pro™ Series LED
 Product Overview

SHEET TITLE
DLPRO MODULE OVERVIEW

UNLESS OTHERWISE SPECIFIED DIMENSIONS ARE IN MILLIMETERS (INCHES).

DRAWN BY
 DRAWN DATE
 SHEET
5 OF 16
 SHEET SIZE REVISION
B A



THIS DRAWING CONTAINS INFORMATION PROPRIETARY TO PLANAR SYSTEMS, INC. ANY REPRODUCTION IN PART OR WHOLE WITHOUT THE WRITTEN PERMISSION OF PLANAR SYSTEMS IS PROHIBITED. THIS DRAWING IS SUPPLIED FOR INFORMATION, IDENTIFICATION, ENGINEERING, EVALUATION, AND/OR INSPECTION PURPOSES ONLY AND MAY NOT BE USED AS BASIS FOR THE MANUFACTURING OF PRODUCTS OR THE DESIGN OF ANY THIRD PARTY UNLESS AUTHORIZED IN WRITING BY PLANAR SYSTEMS.

PRODUCT
DirectLight® Pro™ Series LED
Product Overview

PART NO.

SHEET TITLE
DLPRO MIXED CHAS
FRONT INSTALL

UNLESS OTHERWISE SPECIFIED DIMENSIONS ARE IN MILLIMETERS (INCHES).

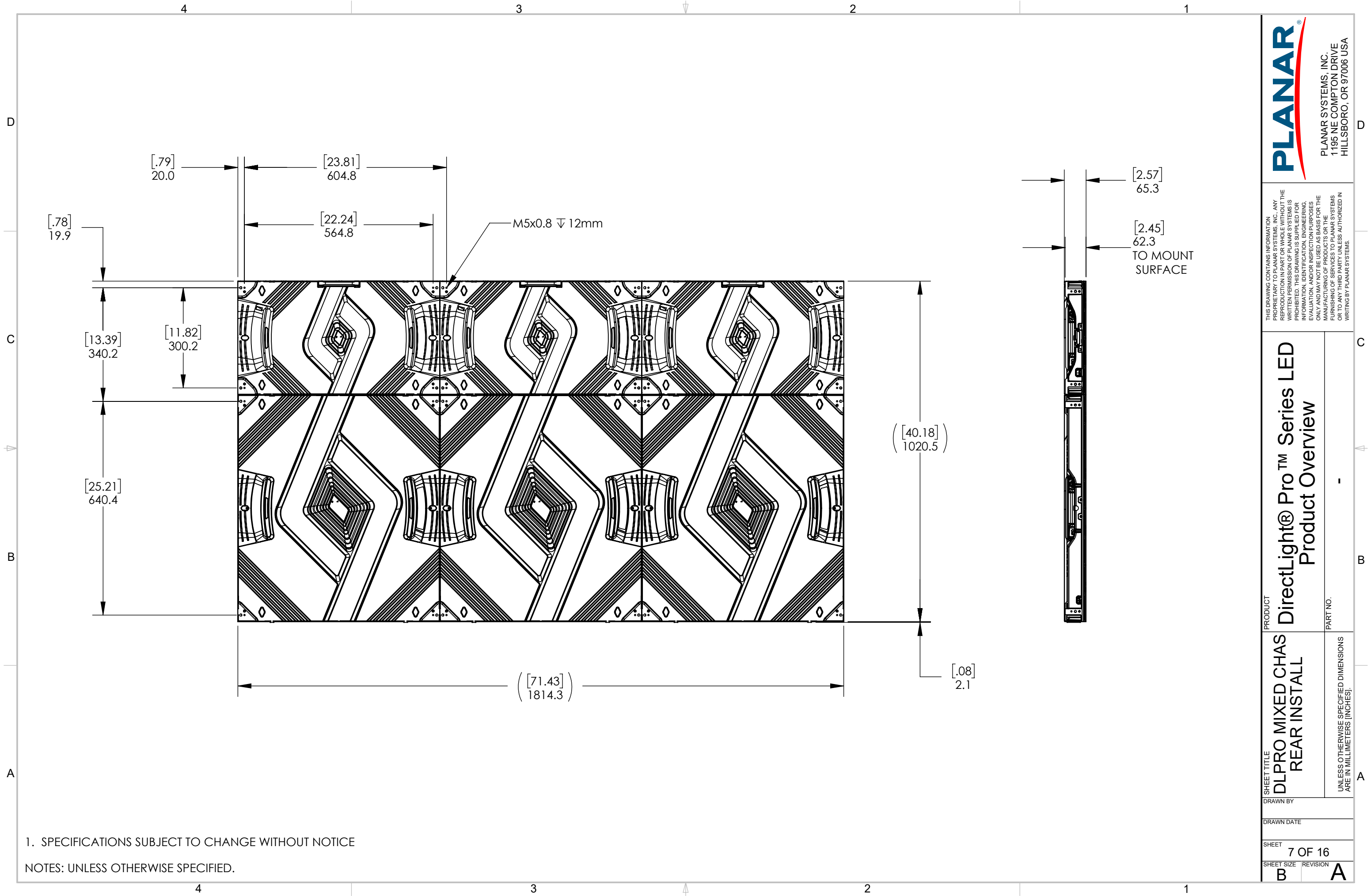
DRAWN BY

DRAWN DATE

SHEET
6 OF 16

SHEET SIZE REVISION
B A

1. SPECIFICATIONS SUBJECT TO CHANGE WITHOUT NOTICE
 NOTES: UNLESS OTHERWISE SPECIFIED.



THIS DRAWING CONTAINS INFORMATION PROPRIETARY TO PLANAR SYSTEMS, INC. ANY REPRODUCTION IN PART OR WHOLE WITHOUT THE WRITTEN PERMISSION OF PLANAR SYSTEMS IS PROHIBITED. THIS DRAWING IS SUPPLIED FOR INFORMATION, IDENTIFICATION, ENGINEERING, EVALUATION, AND/OR INSPECTION PURPOSES ONLY AND MAY NOT BE USED AS BASIS FOR THE MANUFACTURING OF PRODUCTS OR THE DESIGN OF ANY THIRD PARTY UNLESS AUTHORIZED IN WRITING BY PLANAR SYSTEMS.

PRODUCT
DirectLight® Pro™ Series LED
Product Overview

SHEET TITLE
DLPRO MIXED CHAS REAR INSTALL

DRAWN BY

DRAWN DATE

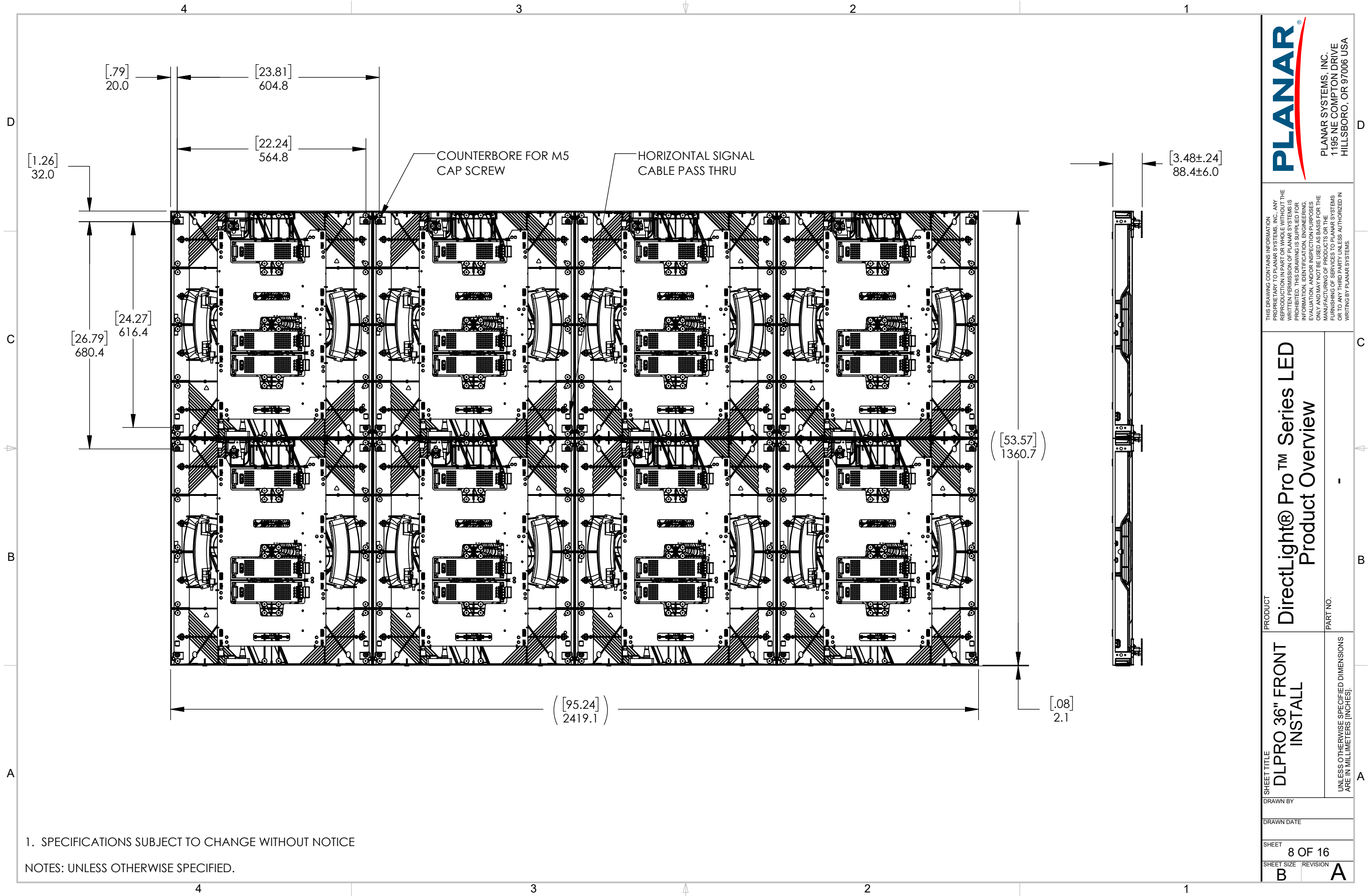
SHEET
7 OF 16

SHEET SIZE REVISION
B A

PART NO.

UNLESS OTHERWISE SPECIFIED DIMENSIONS ARE IN MILLIMETERS (INCHES).

1. SPECIFICATIONS SUBJECT TO CHANGE WITHOUT NOTICE
 NOTES: UNLESS OTHERWISE SPECIFIED.



THIS DRAWING CONTAINS INFORMATION PROPRIETARY TO PLANAR SYSTEMS, INC. ANY REPRODUCTION IN PART OR WHOLE WITHOUT THE WRITTEN PERMISSION OF PLANAR SYSTEMS IS PROHIBITED. THIS DRAWING IS SUPPLIED FOR INFORMATION, IDENTIFICATION, ENGINEERING, EVALUATION, AND/OR INSPECTION PURPOSES ONLY AND MAY NOT BE USED AS BASIS FOR THE MANUFACTURING OF PRODUCTS OR THE DESIGN OF ANY PARTS UNLESS AUTHORIZED IN WRITING BY PLANAR SYSTEMS.

PRODUCT
DirectLight® Pro™ Series LED
 Product Overview

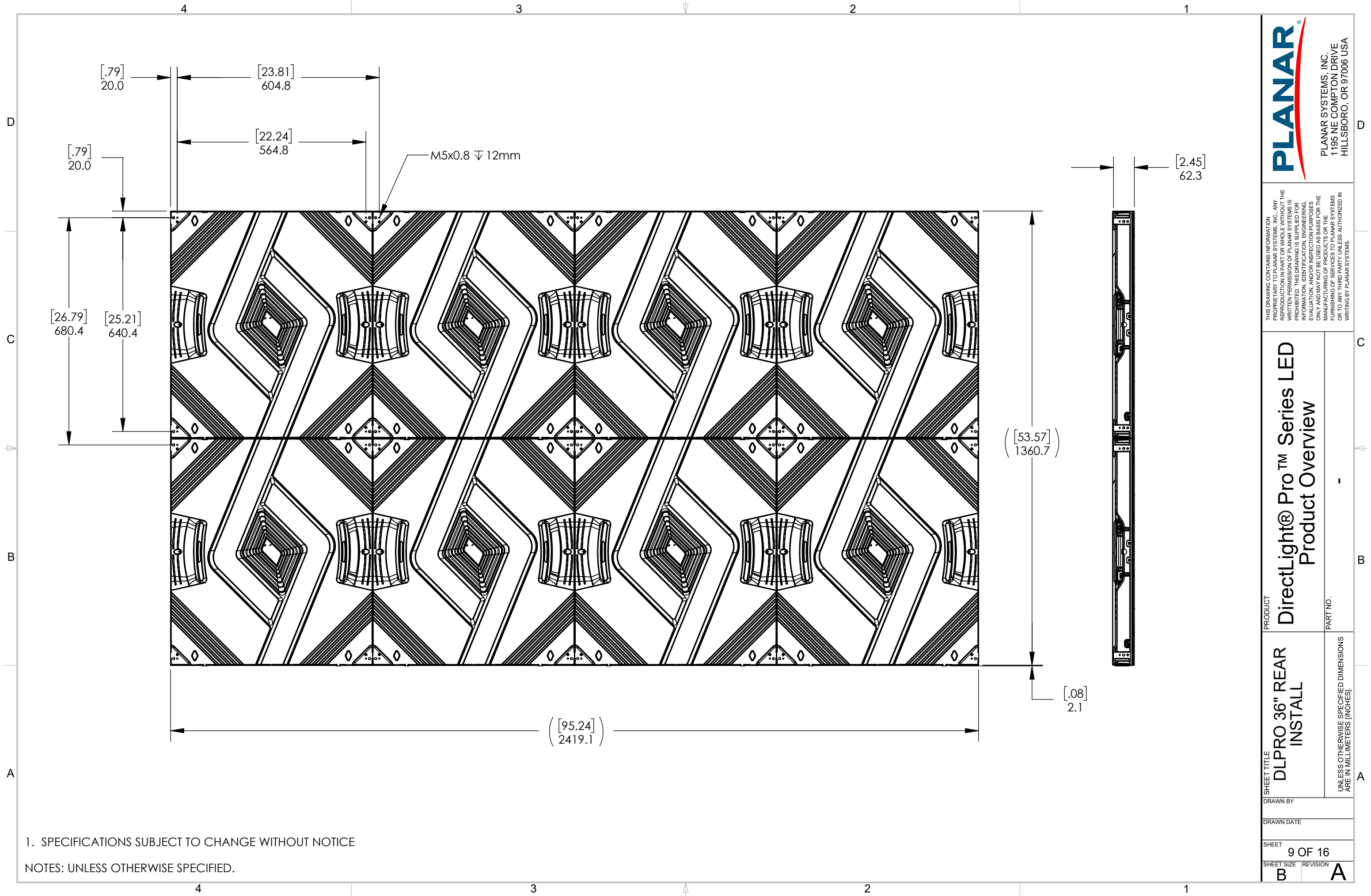
PART NO. -

SHEET TITLE
DLPRO 36" FRONT INSTALL

UNLESS OTHERWISE SPECIFIED DIMENSIONS ARE IN MILLIMETERS [INCHES].

DRAWN BY
 DRAWN DATE
 SHEET
8 OF 16
 SHEET SIZE REVISION
B A

1. SPECIFICATIONS SUBJECT TO CHANGE WITHOUT NOTICE
 NOTES: UNLESS OTHERWISE SPECIFIED.



PLANAR[®]
 PLANAR SYSTEMS, INC.
 1195 NE COMPTON DRIVE
 HILLSBORO, OR 97006 USA

THIS DRAWING CONTAINS INFORMATION PROPRIETARY TO PLANAR SYSTEMS, INC. ANY REPRODUCTION IN PART OR WHOLE WITHOUT THE WRITTEN PERMISSION OF PLANAR SYSTEMS IS PROHIBITED. THIS DRAWING IS SUPPLIED FOR INFORMATION, IDENTIFICATION, ENGINEERING, EVALUATION, AND/OR INSPECTION PURPOSES ONLY AND MAY NOT BE USED AS BASIS FOR THE MANUFACTURING OF PRODUCTS OR THE REPRODUCTION OF PRODUCTS OR THE REPRODUCTION OF ANY THIRD PARTY UNLESS AUTHORIZED IN WRITING BY PLANAR SYSTEMS.

PRODUCT
DirectLight® Pro™ Series LED
 Product Overview

PART NO. -

SHEET TITLE
DLPRO 36" REAR INSTALL

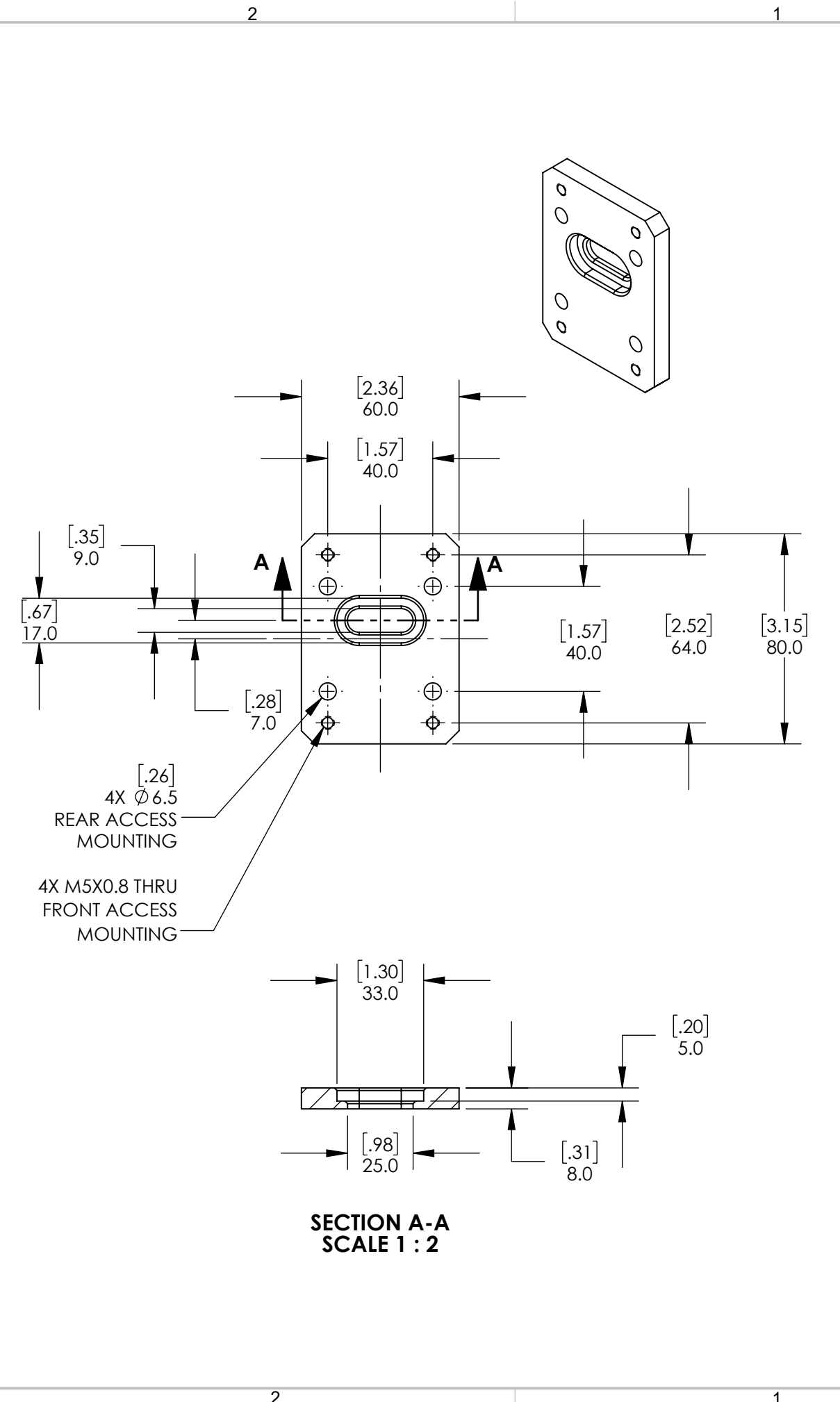
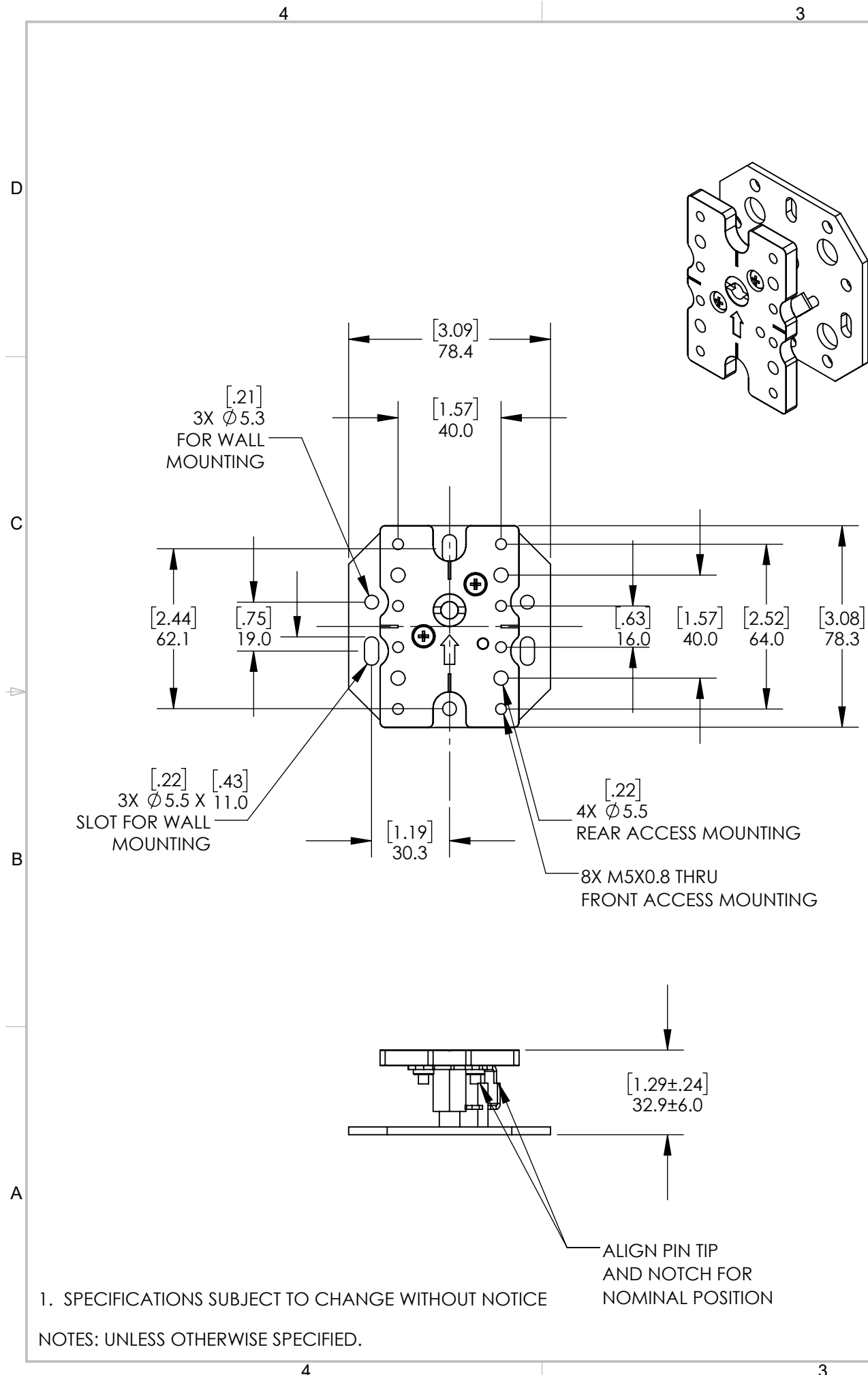
UNLESS OTHERWISE SPECIFIED DIMENSIONS ARE IN MILLIMETERS (INCHES).

DRAWN BY
 DRAWN DATE

SHEET
9 OF 16

SHEET SIZE REVISION
B A

1. SPECIFICATIONS SUBJECT TO CHANGE WITHOUT NOTICE
 NOTES: UNLESS OTHERWISE SPECIFIED.



1. SPECIFICATIONS SUBJECT TO CHANGE WITHOUT NOTICE

NOTES: UNLESS OTHERWISE SPECIFIED.

THIS DRAWING CONTAINS INFORMATION PROPRIETARY TO PLANAR SYSTEMS, INC. ANY REPRODUCTION IN PART OR WHOLE WITHOUT THE WRITTEN PERMISSION OF PLANAR SYSTEMS IS PROHIBITED. THIS DRAWING IS SUPPLIED FOR INFORMATION, IDENTIFICATION, ENGINEERING, EVALUATION, AND/OR INSPECTION PURPOSES ONLY AND MAY NOT BE USED AS BASIS FOR THE MANUFACTURING OF PRODUCTS OR THE DESIGN OF ANY THIRD PARTY UNLESS AUTHORIZED IN WRITING BY PLANAR SYSTEMS.

PRODUCT
DirectLight® Pro™ Series LED
Product Overview

SHEET TITLE

PART NO.

DLPRO MOUNTING ACCESSORIES

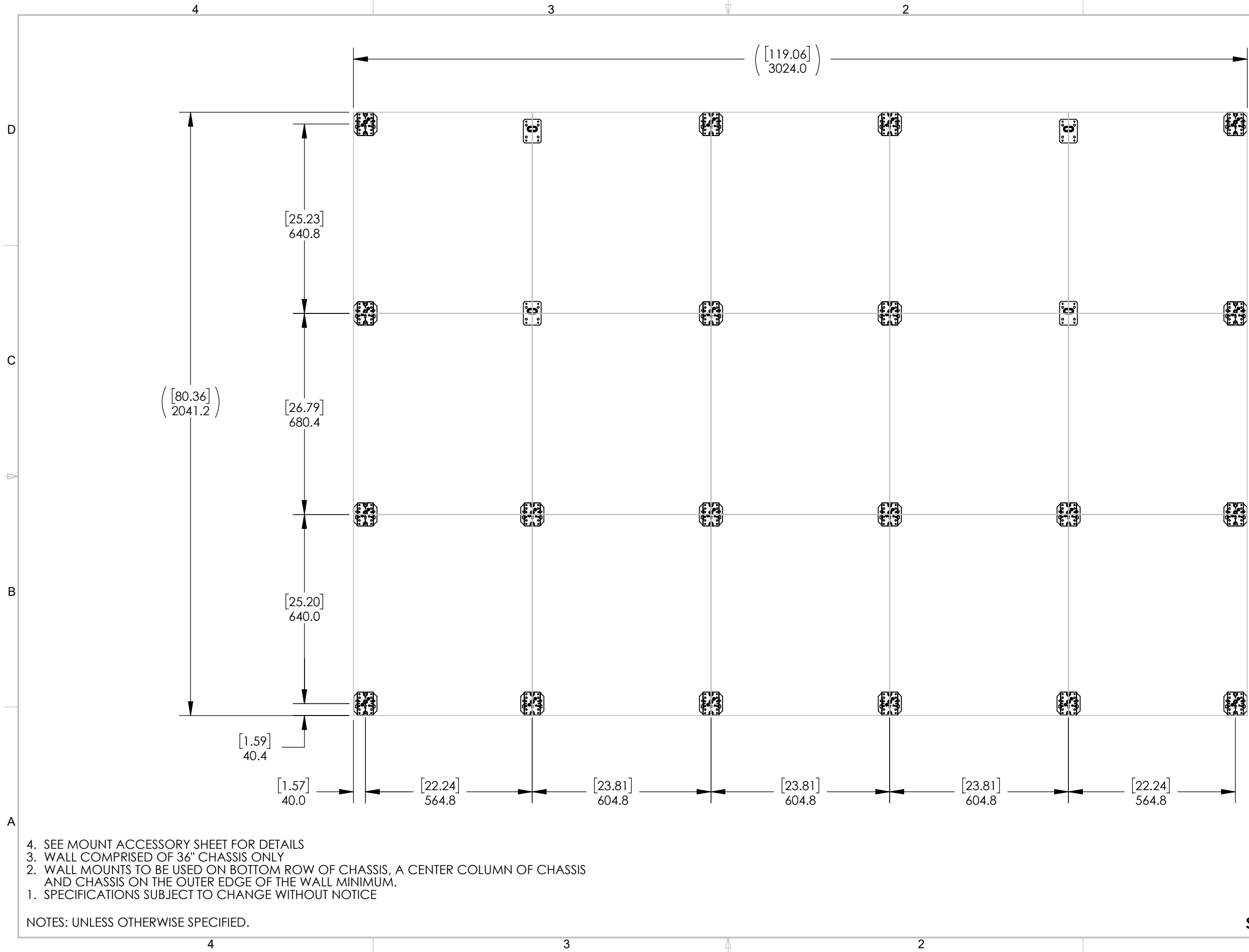
UNLESS OTHERWISE SPECIFIED DIMENSIONS ARE IN MILLIMETERS (INCHES).

DRAWN BY

DRAWN DATE

SHEET
10 OF 16

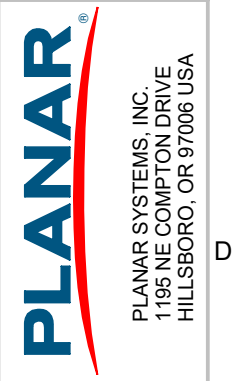
SHEET SIZE REVISION
B A



4. SEE MOUNT ACCESSORY SHEET FOR DETAILS
3. WALL COMPRISED OF 36" CHASSIS ONLY
2. WALL MOUNTS TO BE USED ON BOTTOM ROW OF CHASSIS, A CENTER COLUMN OF CHASSIS AND CHASSIS ON THE OUTER EDGE OF THE WALL MINIMUM.
1. SPECIFICATIONS SUBJECT TO CHANGE WITHOUT NOTICE

NOTES: UNLESS OTHERWISE SPECIFIED.

SCALE 1 : 12



THIS DRAWING CONTAINS INFORMATION PROPRIETARY TO PLANAR SYSTEMS, INC. ANY REPRODUCTION IN PART OR WHOLE WITHOUT THE WRITTEN PERMISSION OF PLANAR SYSTEMS IS PROHIBITED. THIS DRAWING IS SUPPLIED FOR INFORMATION, IDENTIFICATION, ENGINEERING, EVALUATION, AND/OR INSPECTION PURPOSES ONLY AND MAY NOT BE USED AS BASIS FOR THE MANUFACTURING OF PRODUCTS OR THE DESIGN OF ANY PARTS UNLESS AUTHORIZED IN WRITING BY PLANAR SYSTEMS.

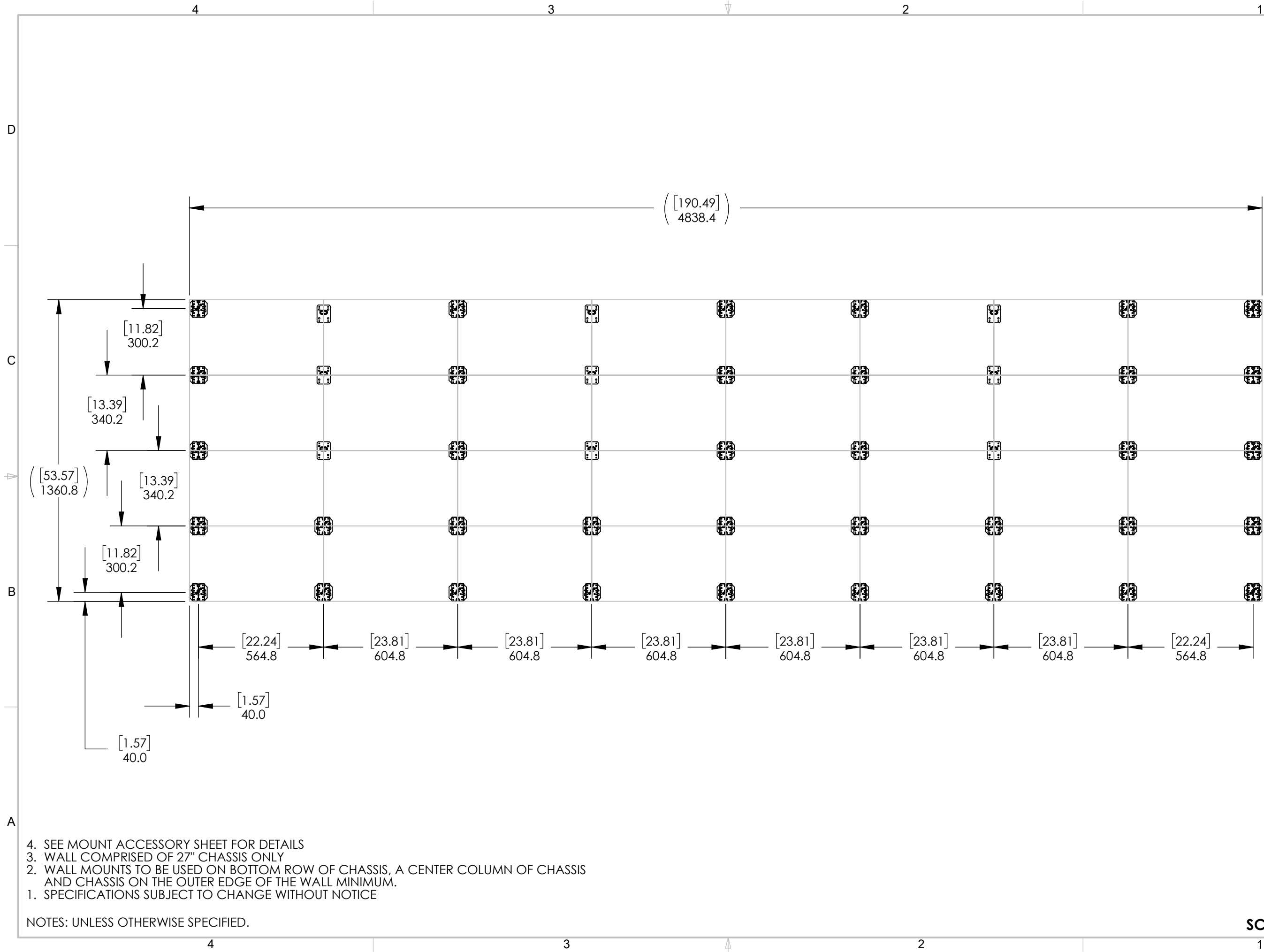
PRODUCT
**DirectLight® Pro™ Series LED
 Product Overview**

PART NO. -

SHEET TITLE
**DLPRO 5X3 UNIT
 WALL MOUNTING**

UNLESS OTHERWISE SPECIFIED DIMENSIONS ARE IN MILLIMETERS (INCHES).

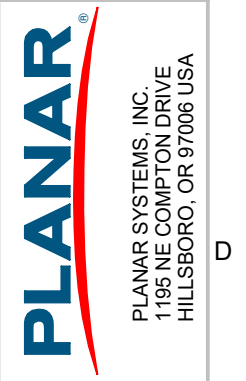
DRAWN BY
 DRAWN DATE
 SHEET
11 OF 16
 SHEET SIZE REVISION
B A



4. SEE MOUNT ACCESSORY SHEET FOR DETAILS
3. WALL COMPRISED OF 27" CHASSIS ONLY
2. WALL MOUNTS TO BE USED ON BOTTOM ROW OF CHASSIS, A CENTER COLUMN OF CHASSIS AND CHASSIS ON THE OUTER EDGE OF THE WALL MINIMUM.
1. SPECIFICATIONS SUBJECT TO CHANGE WITHOUT NOTICE

NOTES: UNLESS OTHERWISE SPECIFIED.

SCALE 1 : 16



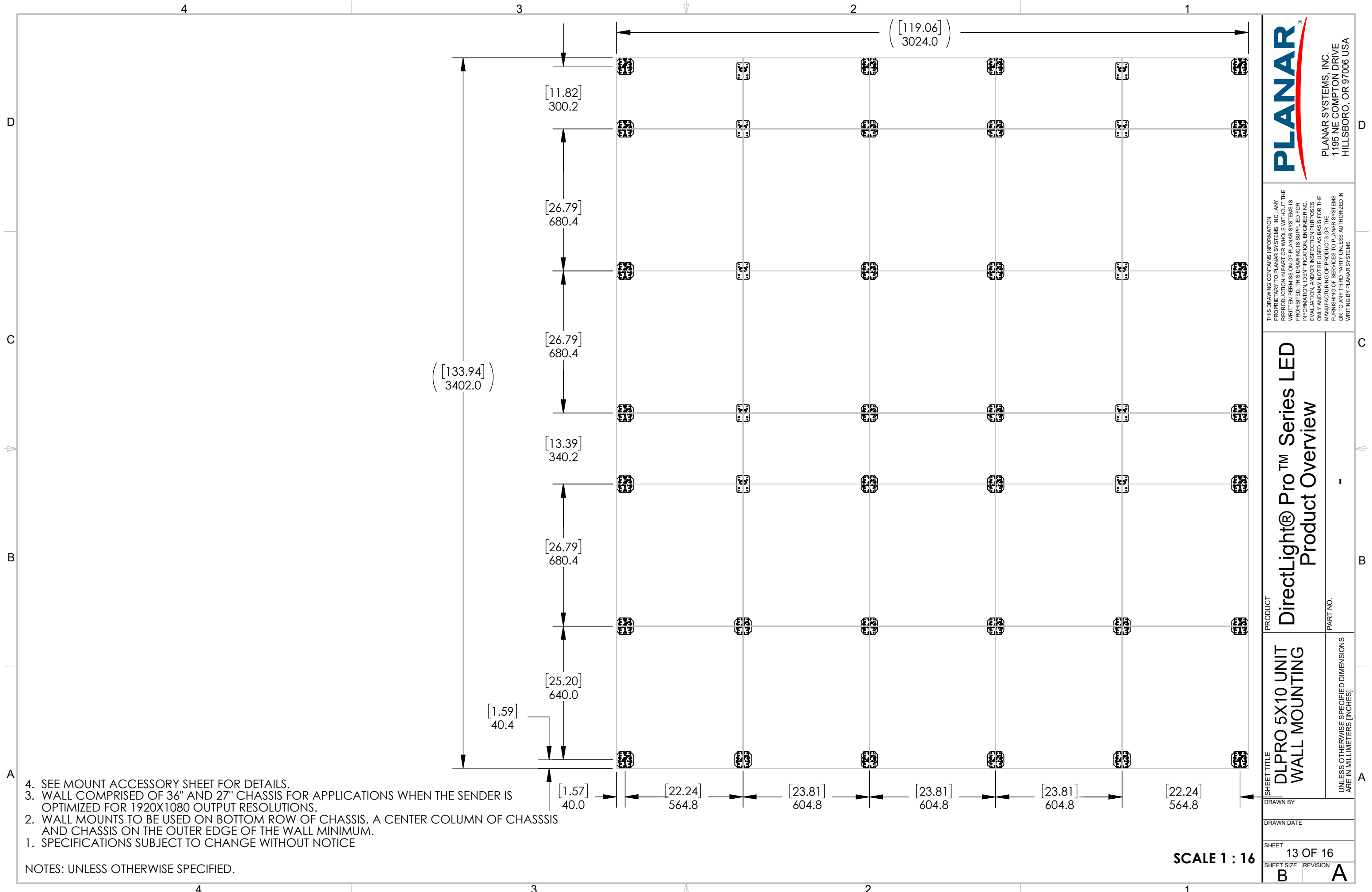
THIS DRAWING CONTAINS INFORMATION PROPRIETARY TO PLANAR SYSTEMS, INC. ANY REPRODUCTION IN PART OR WHOLE WITHOUT THE WRITTEN PERMISSION OF PLANAR SYSTEMS IS PROHIBITED. THIS DRAWING IS SUPPLIED FOR INFORMATION, IDENTIFICATION, ENGINEERING, EVALUATION, AND/OR INSPECTION PURPOSES ONLY AND MAY NOT BE USED AS BASIS FOR THE MANUFACTURING OF PRODUCTS OR THE DESIGN OF ANY PARTS OR SYSTEMS UNLESS AUTHORIZED IN WRITING BY PLANAR SYSTEMS.

PRODUCT
DirectLight® Pro™ Series LED
Product Overview

SHEET TITLE
DLPRO 8X4 UNIT
WALL MOUNTING

DRAWN BY
 DRAWN DATE
 SHEET
12 OF 16
 SHEET SIZE REVISION
B A

PART NO.
 -
 UNLESS OTHERWISE SPECIFIED DIMENSIONS ARE IN MILLIMETERS (INCHES).



4. SEE MOUNT ACCESSORY SHEET FOR DETAILS.
3. WALL COMPRISED OF 36" AND 27" CHASSIS FOR APPLICATIONS WHEN THE SENDER IS OPTIMIZED FOR 1920X1080 OUTPUT RESOLUTIONS.
2. WALL MOUNTS TO BE USED ON BOTTOM ROW OF CHASSIS, A CENTER COLUMN OF CHASSIS AND CHASSIS ON THE OUTER EDGE OF THE WALL MINIMUM.
1. SPECIFICATIONS SUBJECT TO CHANGE WITHOUT NOTICE

NOTES: UNLESS OTHERWISE SPECIFIED.

SCALE 1 : 16

PLANAR
 PLANAR SYSTEMS, INC.
 1195 NE COMPTON DRIVE
 HILLSBORO, OR 97006 USA

THIS DRAWING CONTAINS INFORMATION PROPRIETARY TO PLANAR SYSTEMS, INC. ANY REPRODUCTION IN PART OR WHOLE WITHOUT THE WRITTEN PERMISSION OF PLANAR SYSTEMS IS PROHIBITED. THIS DRAWING IS SUPPLIED FOR INFORMATION, IDENTIFICATION, ENGINEERING, EVALUATION, AND/OR INSPECTION PURPOSES ONLY AND MAY NOT BE USED AS BASIS FOR THE MANUFACTURING OF PRODUCTS OR THE DESIGN OF ANY OTHER PARTS OR SYSTEMS OR TO ANY THIRD PARTY, UNLESS AUTHORIZED IN WRITING BY PLANAR SYSTEMS.

PRODUCT
DirectLight® Pro™ Series LED
Product Overview

PART NO. -

SHEET TITLE
DLPRO 5X10 UNIT WALL MOUNTING

UNLESS OTHERWISE SPECIFIED DIMENSIONS ARE IN MILLIMETERS [INCHES].

DRAWN BY

DRAWN DATE

SHEET 13 OF 16

SHEET SIZE REVISION
 B A

4

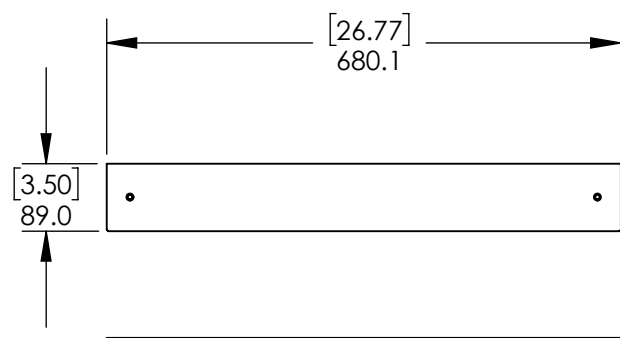
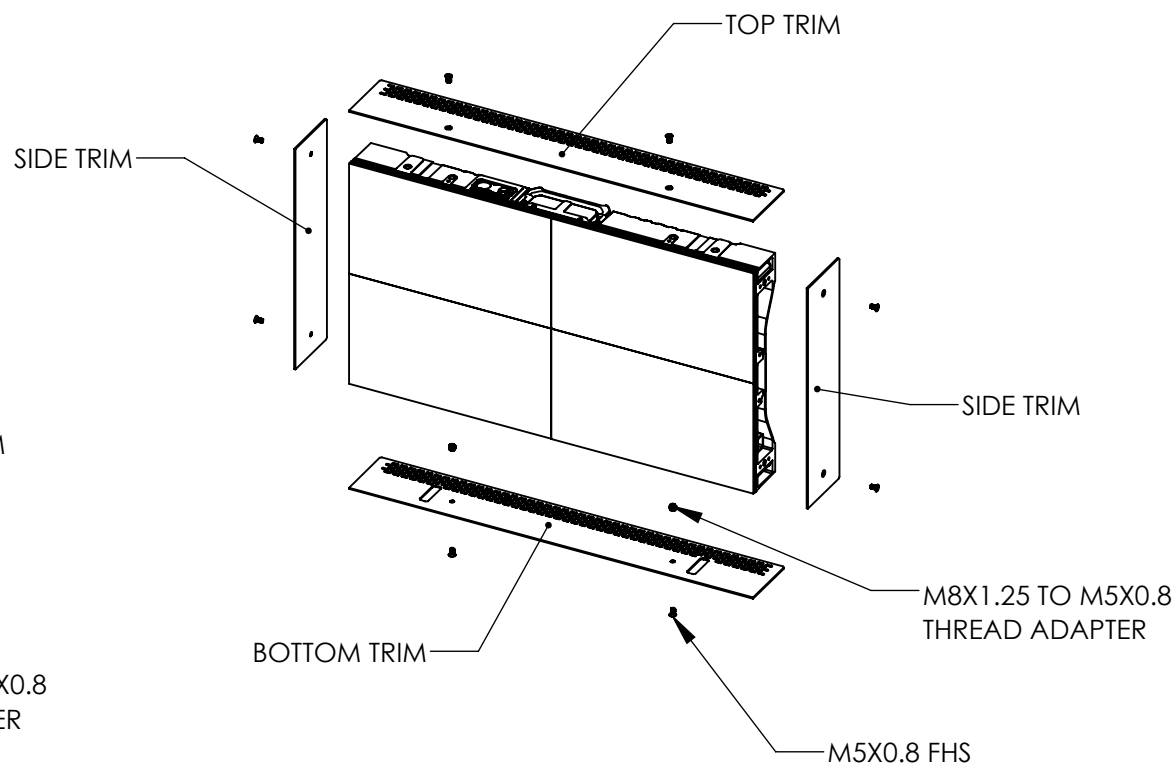
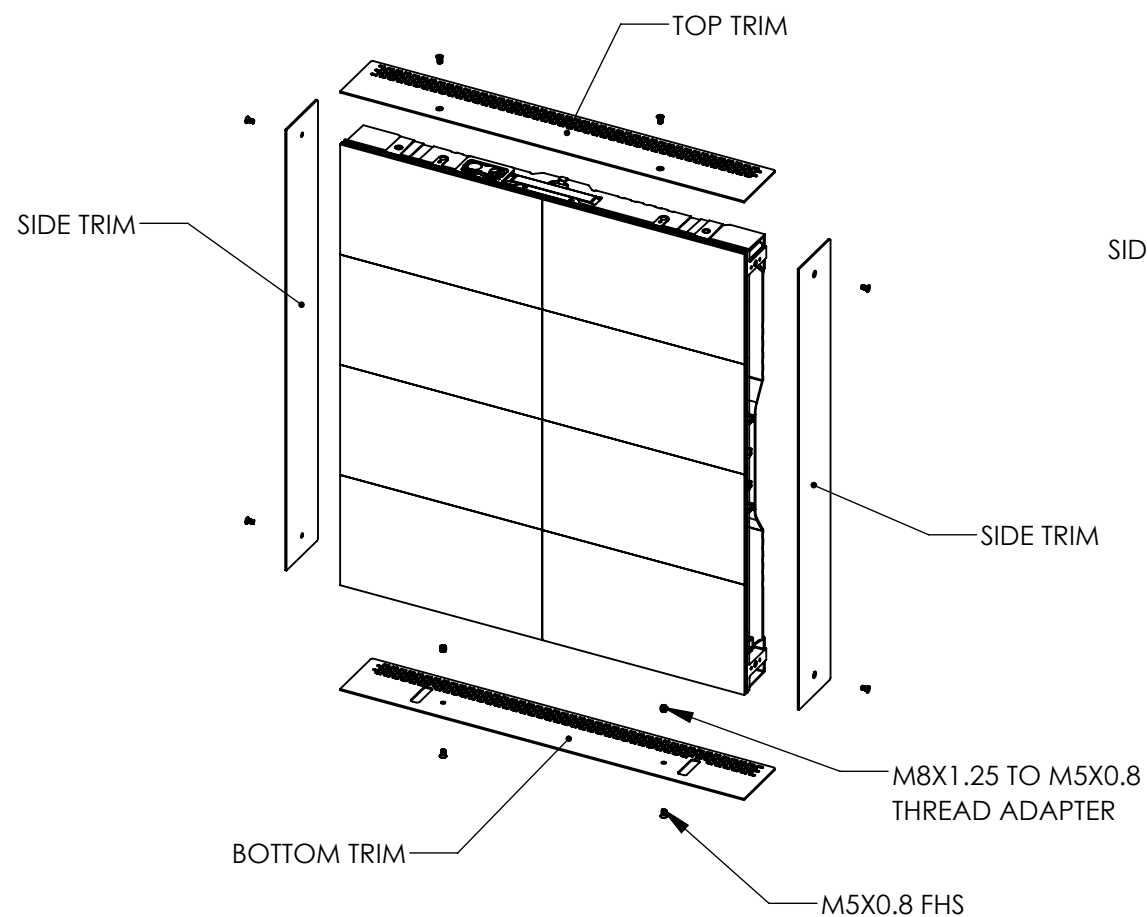
3

2

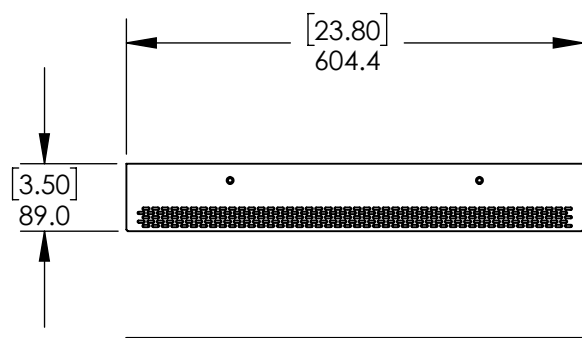
1

DLPro 36 CABINET

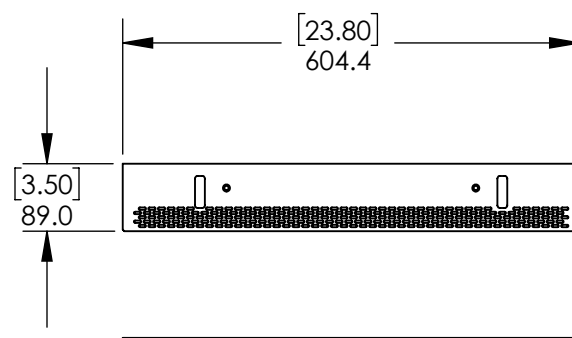
DLPro 27 CABINET



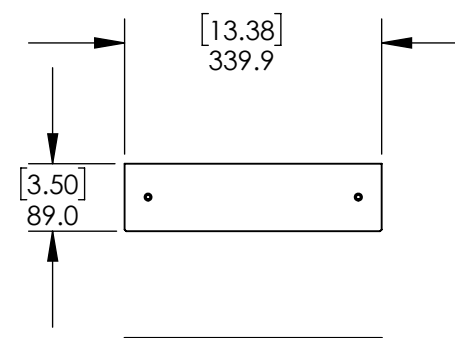
DLPro 36 SIDE



DLPro TOP



DLPro BOTTOM



DLPro 27 SIDE

- 6. KEEP PERFORATION AREAS CLEAR FOR VENTILATION.
- 5. M8 TO M5 THREAD ADAPTERS TO BE USED WHEN ATTACHING BOTTOM TRIM.
- 4. USE M5X0.8 10mm LONG FLATHEAD SCREWS TO ATTACH TRIM, PLAN TOOL ACCESS ACCORDINGLY FOR EXTERNAL INTERFERENCES.
- 3. REMOVE ALIGNMENT PINS AND RETRACT CONNECTOR FOR TOP TRIM ATTACHMENT.
- 2. TRIM IS 2mm THICK.
- 1. SPECIFICATIONS SUBJECT TO CHANGE WITHOUT NOTICE.

NOTES: UNLESS OTHERWISE SPECIFIED.



PLANAR SYSTEMS, INC.
1195 NE COMPTON DRIVE
HILLSBORO, OR 97006 USA

THIS DRAWING CONTAINS INFORMATION PROPRIETARY TO PLANAR SYSTEMS, INC. ANY REPRODUCTION IN PART OR WHOLE WITHOUT THE WRITTEN PERMISSION OF PLANAR SYSTEMS IS PROHIBITED. THIS DRAWING IS SUPPLIED FOR INFORMATION, IDENTIFICATION, ENGINEERING, EVALUATION, AND/OR INSPECTION PURPOSES ONLY AND MAY NOT BE USED AS BASIS FOR THE MANUFACTURING OF PRODUCTS OR THE REPAIR OF PRODUCTS. PLANAR SYSTEMS IS NOT RESPONSIBLE FOR ANY PARTS UNLESS AUTHORIZED IN WRITING BY PLANAR SYSTEMS.

PRODUCT DirectLight® Pro™ Series LED Product Overview

PART NO.

SHEET TITLE DLPRO TRIM

UNLESS OTHERWISE SPECIFIED DIMENSIONS ARE IN MILLIMETERS (INCHES).

DRAWN BY

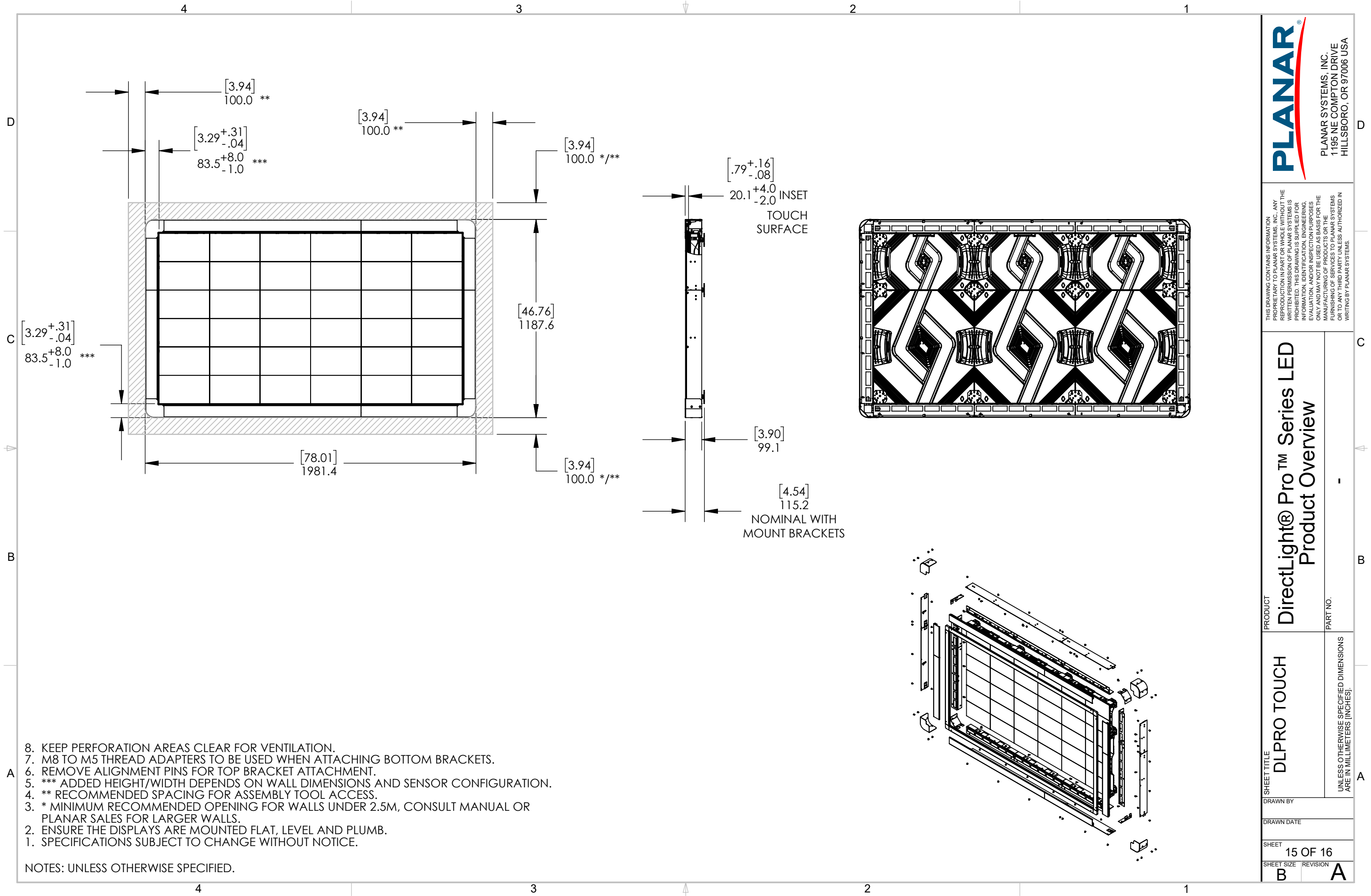
DRAWN DATE

SHEET 14 OF 16

SHEET SIZE REVISION

B

A



8. KEEP PERFORATION AREAS CLEAR FOR VENTILATION.
7. M8 TO M5 THREAD ADAPTERS TO BE USED WHEN ATTACHING BOTTOM BRACKETS.
6. REMOVE ALIGNMENT PINS FOR TOP BRACKET ATTACHMENT.
5. *** ADDED HEIGHT/WIDTH DEPENDS ON WALL DIMENSIONS AND SENSOR CONFIGURATION.
4. ** RECOMMENDED SPACING FOR ASSEMBLY TOOL ACCESS.
3. * MINIMUM RECOMMENDED OPENING FOR WALLS UNDER 2.5M, CONSULT MANUAL OR PLANAR SALES FOR LARGER WALLS.
2. ENSURE THE DISPLAYS ARE MOUNTED FLAT, LEVEL AND PLUMB.
1. SPECIFICATIONS SUBJECT TO CHANGE WITHOUT NOTICE.

NOTES: UNLESS OTHERWISE SPECIFIED.

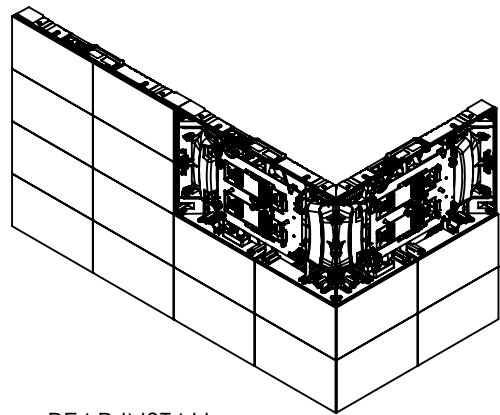
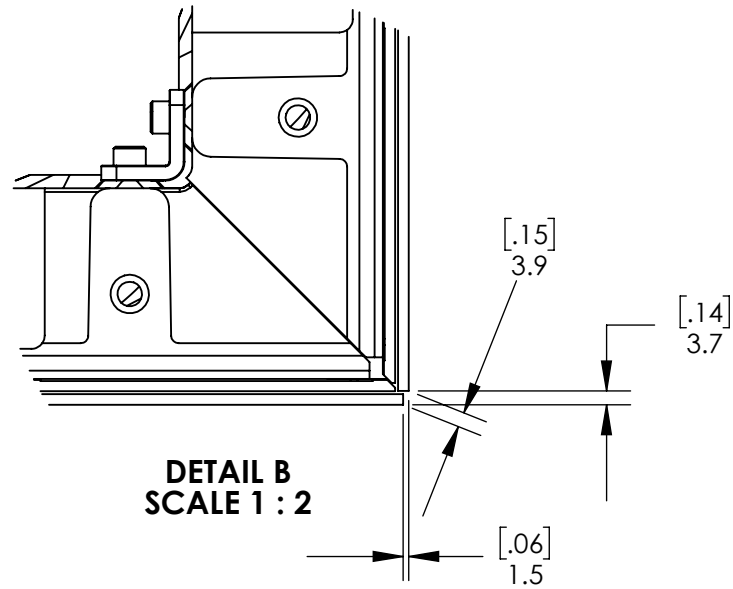
THIS DRAWING CONTAINS INFORMATION PROPRIETARY TO PLANAR SYSTEMS, INC. ANY REPRODUCTION IN PART OR WHOLE WITHOUT THE WRITTEN PERMISSION OF PLANAR SYSTEMS IS PROHIBITED. THIS DRAWING IS SUPPLIED FOR INFORMATION, IDENTIFICATION, ENGINEERING, EVALUATION, AND/OR INSPECTION PURPOSES ONLY AND MAY NOT BE USED AS BASIS FOR THE MANUFACTURING OF PRODUCTS OR THE DESIGN OF ANY THIRD PARTY UNLESS AUTHORIZED IN WRITING BY PLANAR SYSTEMS.

PRODUCT
DirectLight® Pro™ Series LED
 Product Overview

SHEET TITLE
DLPRO TOUCH

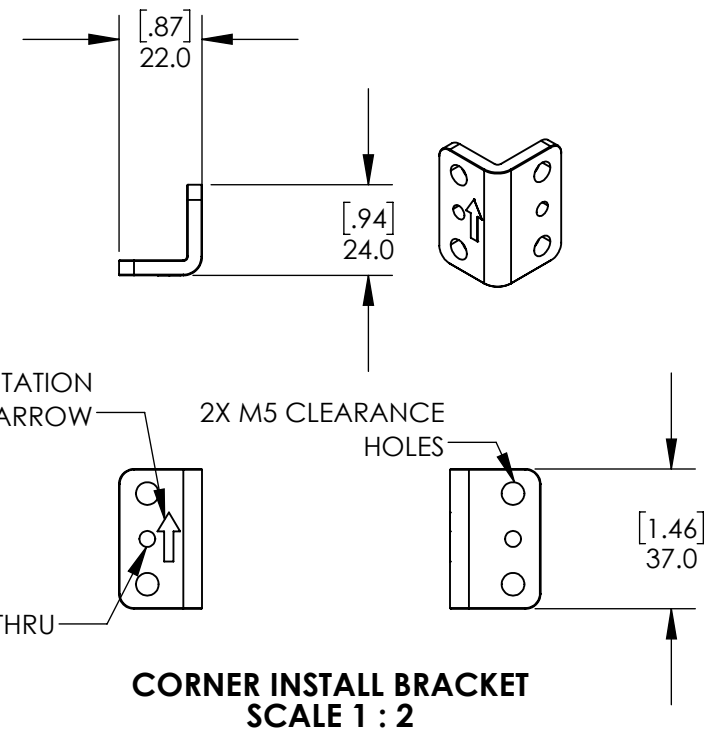
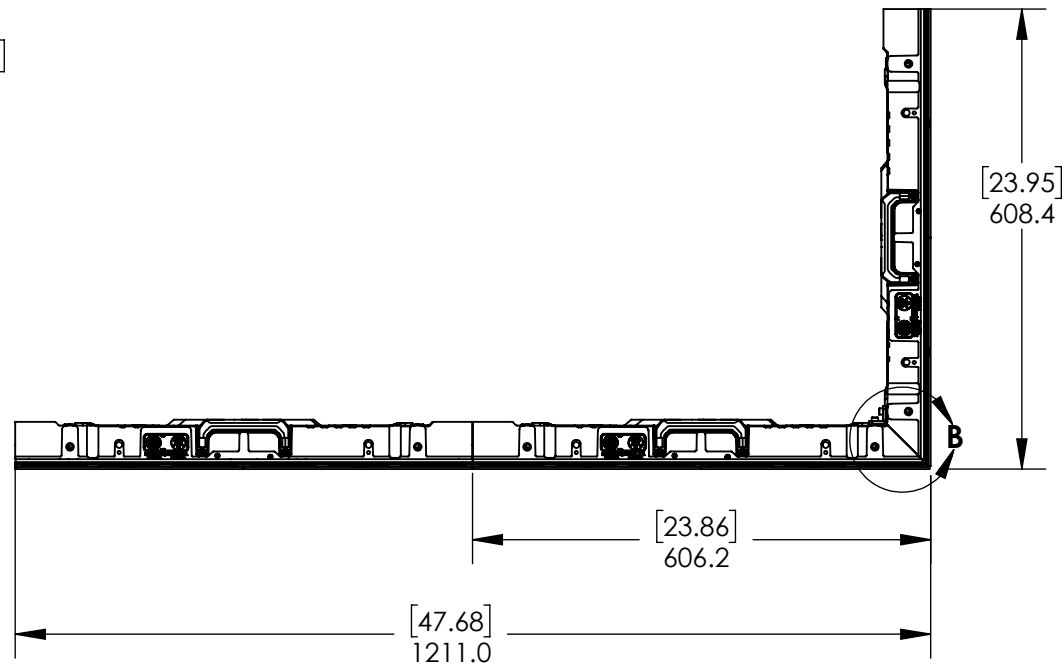
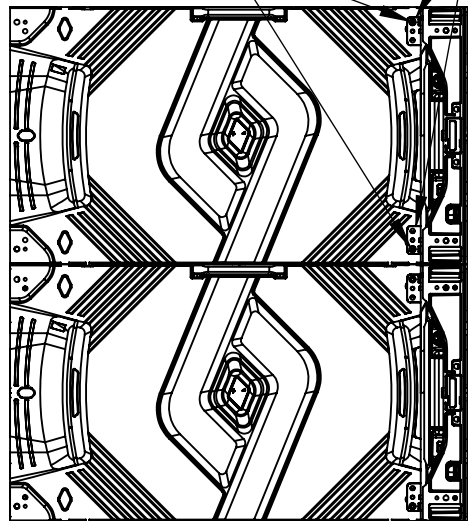
DRAWN BY
 DRAWN DATE
 SHEET
15 OF 16
 SHEET SIZE REVISION
B A

PART NO.
 -
 UNLESS OTHERWISE SPECIFIED DIMENSIONS ARE IN MILLIMETERS (INCHES).

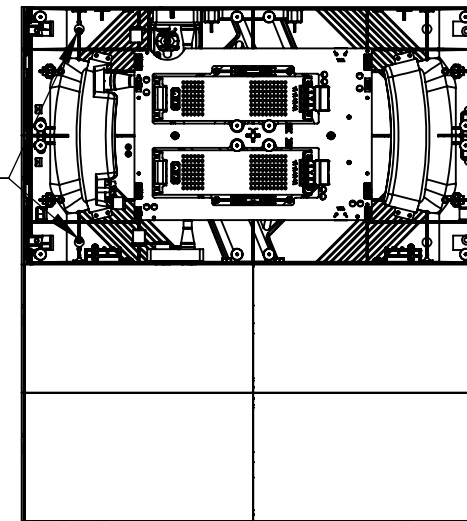
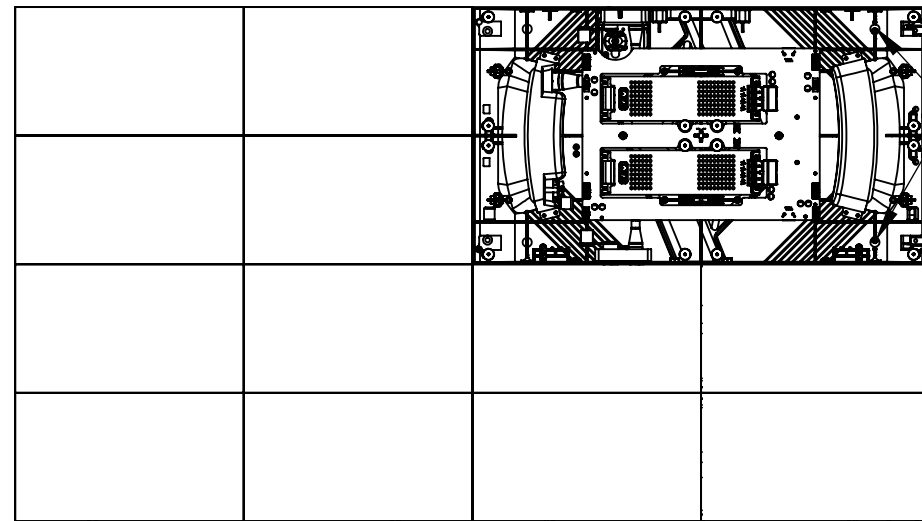


REAR INSTALL
M5X0.8 14mm
SHCS LOCATION

CORNER INSTALL
BRACKET



FRONT INSTALL
M5X0.8 14mm
SHCS LOCATION



PLANAR
PLANAR SYSTEMS, INC.
1195 NE COMPTON DRIVE
HILLSBORO, OR 97006 USA

THIS DRAWING CONTAINS INFORMATION PROPRIETARY TO PLANAR SYSTEMS, INC. ANY REPRODUCTION IN PART OR WHOLE WITHOUT THE WRITTEN PERMISSION OF PLANAR SYSTEMS IS PROHIBITED. THIS DRAWING IS SUPPLIED FOR INFORMATION, IDENTIFICATION, ENGINEERING, EVALUATION, AND/OR INSPECTION PURPOSES ONLY AND MAY NOT BE USED AS BASIS FOR THE MANUFACTURING OF PRODUCTS OR THE DESIGN OF ANY THIRD PARTY UNLESS AUTHORIZED IN WRITING BY PLANAR SYSTEMS.

PRODUCT
DirectLight® Pro™ Series LED
Product Overview

PART NO.

SHEET TITLE
**DLPRO OUTSIDE
CORNER INSTALL**

UNLESS OTHERWISE SPECIFIED DIMENSIONS ARE IN MILLIMETERS (INCHES).

DRAWN BY

DRAWN DATE

SHEET

16 OF 16

SHEET SIZE REVISION

B

A

1. SPECIFICATIONS SUBJECT TO CHANGE WITHOUT NOTICE.

NOTES: UNLESS OTHERWISE SPECIFIED.