



Product introduction

Planar TXC Series is the latest generation of micro-pitch LED display. The new series product inherits the excellent performance of fine pitch LED. TXC provides a smooth concave LED solution with minimum pixel pitch of 0.78mm for unparalleled visual effects. The color performance of the Planar TXC Series has been greatly improved now DCI P3 can achieve the highest color gamut range and display richer green and red, the technology of Hollywood movie playback. Planar TXC Series adopts a unique patented technology which achieve a smooth surface on the entire display. Compared with the traditional products that are folded and spliced into an arc, Planar TXC Series can achieve the best curved-shaped display surface with a diameter of less than 4m according to the actual installation size.

Highest Resolution

With precise pixel pitch values and cabinets featuring a 16:9 aspect ratio, Planar DirectLight Ultra Series models can achieve exact Full HD, 4K or 8K resolution.

Models	1 x 1	2 x 2	3 x 3	4 x 4	5 x 5	6 x 6	7 x 7	8 x 8	9 x 9	10 x 10	11 x 11	12 x 12
TXC-0.7	768 x 432	1536 x 864	2304 x 1296	3072 x 1728	3840 x 2160	4608 x 2592	5376 x 3024	6144 x 3456	6912 x 3888	7680 x 4320	8448 x 4752	9216 x 5184
TXC-0.9	640 x 360	1280 x 720	1920 x 1080	2560 x 1440	3200 x 1800	3840 x 2160	4480 x 2520	5120 x 2880	5760 x 3240	6400 x 3600	7040 x 3960	7680 x 4320
TXC-1.2	480 x 270	960 x 540	1440 x 810	1920 x 1080	2400 x 1350	2880 x 1620	3360 x 1890	3840 x 2160	4320 x 2430	4800 x 2700	5280 x 2970	5760 x 3240
TXC-1.5	384 x 216	768 x 432	1152 x 648	1536 x 864	1920 x 1080	2304 x 1296	2688 x 1512	3072 x 1728	3456 x 1944	3840 x 2160	4224 x 2376	4608 x 2592

Video Wall Sizes

Area (sqm)	0.20	0.81	1.82	3.24	5.06	7.29	9.92	12.96	16.40	20.25	24.50	29.16
Diagonal	27"	54"	81"	108"	136"	163"	190"	217"	244"	271"	298"	325"
Feet/Meters	2.0 x 1.1ft 0.6 x 0.3m	3.9 x 2.2ft 1.2 x 0.7m	5.9 x 3.3ft 1.8 x 1.0m	7.9 x 4.4ft 2.4 x 1.4m	9.8 x 5.5ft 3.0 x 1.7m	11.8 x 6.6ft 3.6 x 2.0m	13.8 x 7.8ft 4.2 x 2.4m	15.8 x 8.9ft 4.8 x 2.7m	17.8 x 10.0ft 5.4 x 3.0m	19.7 x 11.1ft 6.0 x 3.4m	21.7 x 12.2ft 6.6 x 3.7m	23.6 x 13.3ft 7.2 x 4.1m

Full HD 1920 x 1080

4K 3840 x 2160

8K 7680 x 4320

KEY FEATURES



HDR Ready



Micro Pitch (<1.0mm)



DCI P3 Color Gamut



Optimized to 4K/8K



Superior Heat Management



Minimum Radius of Curvature is 2m



"Cableless" Connection



6-axis Alignment



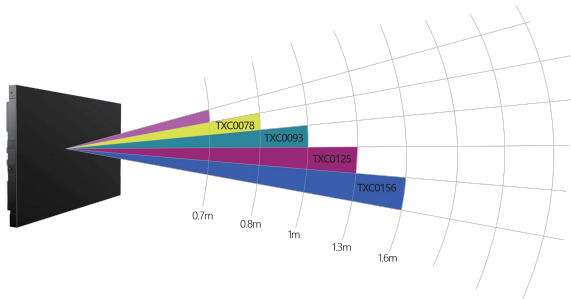
Module Z-direction Adjustment

Technology advantages



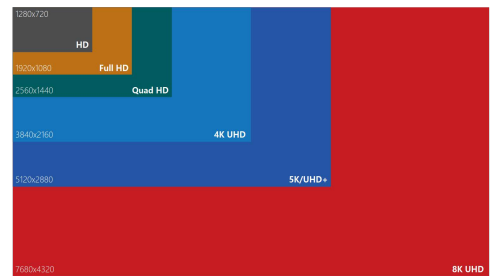
Viewer-friendly

TX platform products deliver an amazing viewing experience. The incredible short viewing distance will introduce the products to brand-new applications.



Ultra High Definition 4K, 8K Display

The modular design of TX series makes ultra-high-definition physical resolution display easier to implement. The micro-pitch LED products enable a more reasonable picture size for indoor 4K and 8K screens.



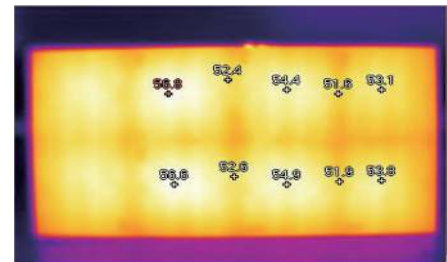
6-axis Alignment

A uniform tool can be used for X/Y/Z 6-axis adjustment between panels. Module can be easily adjusted in Z-direction, and flatness can be optimized again.



Superior Heat Management

TX platform uses the latest heat flow control technology to ensure uniform heat dissipation inside the panel, thus ensuring uniformity of display and delaying the light decay of LED lamps.



Multi-installation Way

Item:TXC-0.7 / TXC-0.9 / TXC-1.2 / TXC-1.5

Cabinet Dimension:600x337.5x100mm

Grey Level (bit):25



Product advantage

- * Upgrade the screen from 2K to 4K
- * Size for indoor 4K and 8K screens
- * LED features Nanosecond response time

Item	TXC-0.7		TXC-0.9		TXC-1.2	TXC-1.5	
Pixel Configuration	SMD 3in1/Mini 2in1	4in1 Micro LED	SMD 3in1/Mini 2in1	4in1 Micro LED	SMD 3in1/Mini 2in1	SMD 3in1/Mini 2in1/Mini 4in1	SMD 3in1/Mini 2in1
Pitch	0.78125mm		0.9375mm		1.25mm	1.5625mm	
Module Resolution (WxH)	192x216		160x180		120x135	96x108	
Module Size (WxHxD)	150x168.75x11mm		150x168.75x11mm		150x168.75x11mm	150x168.75x11mm	
Module Weight	0.16Kg						
Module Composition (WxH)	4x2						
Cabinet Resolution	768x432		640x360		480x270	384x216	
Pixel Density	1638400/m²		1137778/m²		640000/m²	409600/m²	
Minimum Diameter of Curvature (m)	4		3				
Surface Flatness	≤0.1mm					≤0.15mm	
Peak Brightness (after calibration)	1000nits	1200nits	1000nits	2000nits	1000nits		
White Balance Brightness (after calibration)	600~800nits	800~1000nits	600~800nits	1000~1200nits	600~800nits		
Horizontal Viewing Angle	160°	170°	160°	170°	160°		
Vertical Viewing Angle	140°	150°	140°	150°	140°		
NTSC Gamut Coverage	112%	126%	112%	126%	112%		
Contrast Ratio	3000:1		4000:1		5000:1		
Refresh Rate	1600~3840Hz		1600~3840Hz		1600~3840Hz	1600~7680Hz	
Peak Power Consumption @Max Brightness (W/unit; W/m²) (single power supply)	115; 575						
Average Power Consumption @Max Brightness (W/unit; W/m²) (single power supply)	70; 350	80; 400	50; 250	60; 300	45; 225	40; 200	
Average Power Consumption @600nit (W/unit; W/m²) (single power supply)	-	70; 350	-	40; 200	-		
IP Level (Front)	IP5X						
IP Level (Rear)	IP3X						
Color Temperature	3000~10000K adjustable						
Brightness Calibration	Yes						
Color Calibration	Yes						
Cabinet Dimension (WxHxD)	600x337.5x100mm						
Unit Area	0.2025m²						
Cabinet Weight (Kg/cabinet; Kg/m²) (single power supply)	6.9; 34.1;(D=3m)						
Power Supply	AV100~240V(50/60Hz)						
Power Configuration	Single Power Supply (Dual power supply optional)						
Drive Mode	Common Cathode PWM Driving						
Frame Rate	50&60Hz						
Grey Level	25bit						
HDR Type	HLG/HDR10						
Deviation of LED Luminance	<3%						
Center (after calibration)	≥97%						
Chromaticity Uniformity	±0.003Cx,Cy within						
Lifetime	100,000hrs						
Operation Temperature	-10~40°C						
Storage Temperature	-20~60°C						
Operation Humidity (RH)	10~80% no condensation						
Storage Humidity (RH)	10~85% no condensation						