

Planar LA95T Series

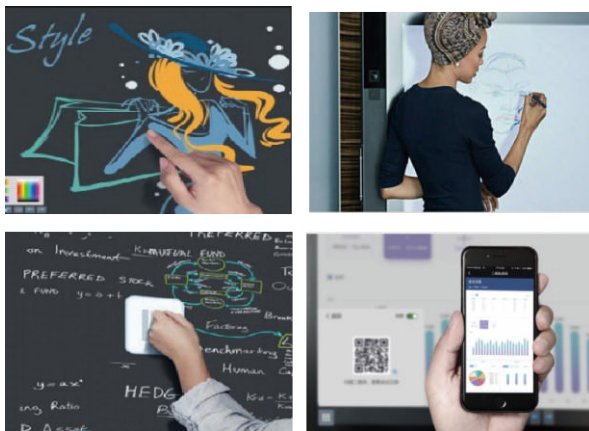
Intelligent Interactive Conference AIO

- ▶ Array microphone, clear sound
- ▶ Full HD Camera, excellent imaging
- ▶ Dual-path USB ports, auto switch
- ▶ 3840 * 2160@60Hz
- ▶ OTA upgrade, Not need terminate APP running
- ▶ Supporting WiFi 6, dual frequency 2.4G/5G, AP+STA working mode



Planar® LA95T series is a high-performance conference display device. It features 4K ultra-high-definition display technology with a narrow bezel design, providing users with clear and smooth display effects.

Additionally, the device is equipped with a customized Android system design, which includes an intelligent core and operating system. Users can also install third-party conferencing software on the device's PC channel for greater flexibility and convenience.



Intelligent Writing, More Creativity

- Fluent Writing: $\pm 1\text{mm}$ writing precision, smooth writing experience enabling creativity.
- Gesture Erasure: finger writing, erasing with hand back, two-point zoom, multi-point moving.
- Intelligent Recognition: Automatic recognition of tables and graphs, easily converting handwritten and hand-drawn elements into digital content available for edits.
- Saving By Code Scanning: Scan QR code on the screen to download minutes of meetings onto your device. Effective, convenient and flexible.



Multi-screen interaction, Efficient collaboration

- Wireless screen Projection: real-time content sharing for computer, mobile phone and tablet, enabling "wirelessly efficient collaboration".
- 4-screen Split: Multiple solutions can be easily compared to stimulate intellectual vitality and improve efficiency.
- Ultra-low Delay: Ultra-fast screen mirror, PPT/1,080P video playback smooth and not stalled.
- Mutual Control: it allows you to reversely control PC on the screen, more convenient and easy interaction.

Specifications

Model	LA6595T	LA7595T	LA8695T	LA9895T
Screen Size	65"	75"	86"	98"
Active Area(H x V)	1428.48 x 803.52mm	1649.664 x 927.936mm	1895.04 x 1065.96mm	2158.848 x 1214.352mm
Outline Dimensions	1488 x 906 x 87mm	1709x 1029 x 88mm	1957x 1169 x 88mm	2216.80 x 1331.06 x 104.3mm
Package Dimensions	1630 x 1050 x 220mm	1860 x 1160 x 220mm	2120 x 1325 x 220mm	2525 x 1700 x 325mm
Net Weight	35kg	47kg	62kg	90kg
Gross Weight	46kg	61kg	78kg	131kg
Frame Rate	60Hz	60Hz	60Hz	60Hz
VESA	600 x 400mm	800 x 400mm	800 x 600mm	1000 x 400mm
Contrast Ratio(typ)	5000:1	4000:1	5000:1	1300:1(typ)
Brightness(typ)	350 cd/m²			400 cd/m²
Sound Track	2.0			2.1
Speaker	2 x 16W			2 x 16W(Medium high)+20W(bass)
Camera Pixel	13M			48M
Camera FOV	DFOV 100° HFOV:91.9° VFOV:60°			DFOV: 86° HFOV:75° VFOV:50°
Mic Number	6			8
Power consumption	400W(MAX), ≤0.5W(Standby)		550W(MAX), ≤0.5W(Standby)	480W(MAX), ≤0.5W(Standby)
Power Suuply	100-240V~ 50/60Hz 4A			
Backlight Type	D-LED			
Color Gamut(typ)	72%			
Colours	10bit, 1.07B			
Display Resolution	3840 x 2160			
Aspect Ratio	16:9			
Viewing Angle, Horizontal, Vertical	178° H, 178°V			
MTBF	≥30000h			
Cameras	1			
Camera Position	In the middle of the top border			
MIC Picking-up	8m			
Touch Technology	IR			
Touch Points	20			
Touch Points	Finger, Pen or other opaque object			
Response Time	<10ms			
Touch Accuracy	±1mm(>90% Touch area)			
Touch Coordinates(W x D)	32767 x 32767			
Version	Android 11.0			
Built-in System	CPU: A55 x 4 GPU: Mali G52MP2 RAM: 4GB ROM: 32GB			CPU: A73 x 4 + A53 x 4 GPU: Mali G52 x 8 RAM: 4GB ROM: 32GB
Interface	Input Interface: HDMI x 3, VGA x 1, SPDIF x 1, Audio x 1 Output Interface: Audio Out x 1, HDMI Out x 1, Other Interface: OPS x 1, RS232 x 1, USB2.0 x 1, Touch USB x 2, Type-C x 1, USB3.0 x 4, RJ45 In/Out x 1			Input Interface: HDMI x 3, VGA x 1, COAX x 1, Audio x 1, DP x 1 Output Interface: Audio Out x 1, HDMI Out x 1, Other Interface: OPS x 1, RS232 x 1, USB2.0 x 1, Touch USB x 3, Type-C x 2, USB3.0 x 4, RJ45 x 2
Optional	Smart Pen x 2, Power cord, wall bracket			Smart Pen x 1, Power cord, wall bracket