



AT SERIES ULTRA-THIN COMMERCIAL LED DISPLAY

AT SERIES AT009 / AT011 / AT012 / AT014 / AT015 / AT018 / AT025 / AT040



INTELLIGENT COMMERCIAL LED DISPLAY

AT is a new series of intelligent commercial fine-pitch LED display products with ultra-thin, ultra-light structural and 4K, HDR features. AT supports stacking and hanging installations to form a screen in a flat or curved shape. It is the smart choice for commercial retail, high-end board rooms, intelligent digital out-of-home and other applications.

KEY FEATURES



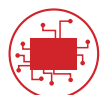
HDR Ready



Ultra-thin



Front Maintenance



Intelligent Module



Quick Lock



Curved Installation



"Cableless" Connection



6-axis Alignment



Fanless Design

TECHNOLOGY ADVANTAGES



Ultra-thin

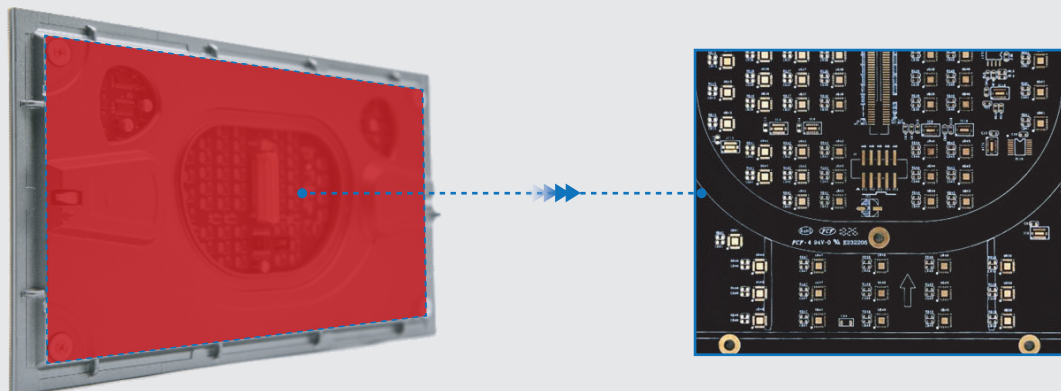
ONLY 29.5MM THICK





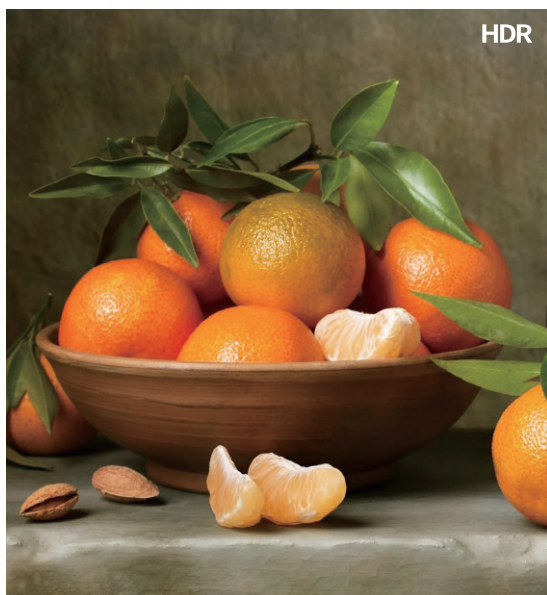
Intelligent Module

The modules of AT products have digital signature technology. Each module has an independent storage system, and the calibration data is stored in the module. After the screen is physically installed, the software will read out each individual LED's raw brightness/chroma data, a calibration matrix is generated to modulate the input video signals to the screen and result in a wonderful uniformity. This feature is very beneficial when replacing a LED module.



HDR(Optional)

Support HDR function to meet the display requirements of ultra clear 4K.





Advanced Motion Compensation

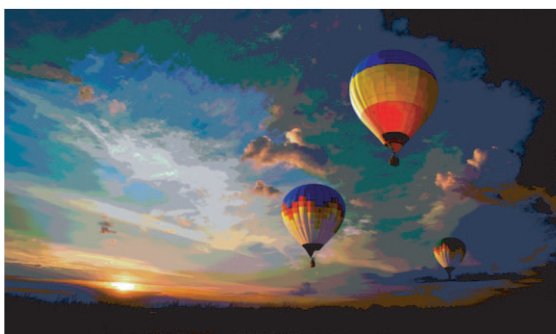
LED features Nanosecond response time, the interval between ON and OFF is extremely short. It could rapidly response without Visual Staying Phenomenon, very clear. It has big advantage for those applications requiring super good dynamic rendering effect. The self emitting mode for LED needs no response time, no visual staying phenomenon happened even when people observe the rapid movement objects.



16 bit

High Grayscale

Perfect grayscale performance in the area of low brightness. AT can display more screen layering and color degrees without detail loss.



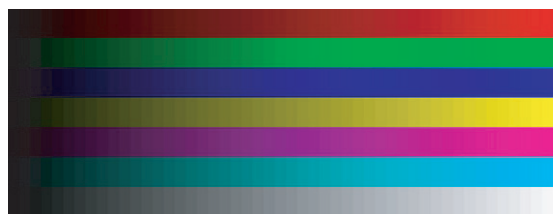
▲ Low gray level, colored blocks and highlighted areas



▲ High gray level, rich in color, natural transition



▲ Low gray level, obvious color difference

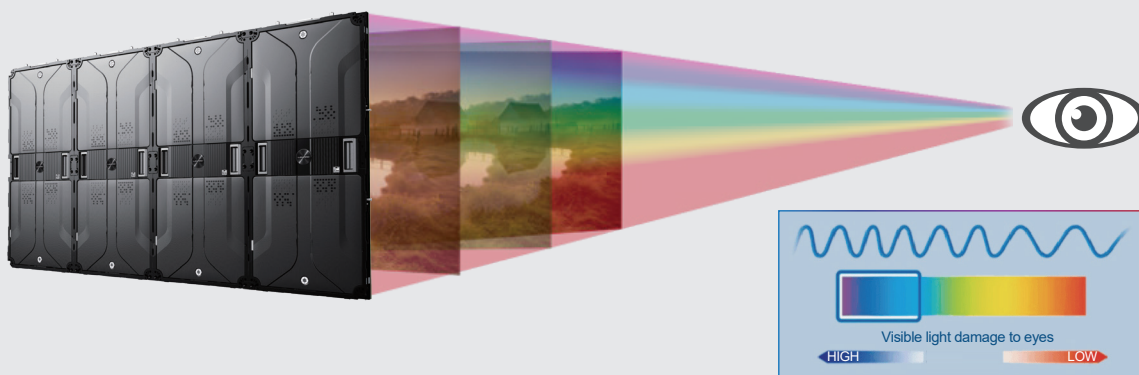


▲ High gray level, smoother color transition



Viewer-friendly

AT series pass the blue light ratio test, it is a low blue light mode product for a long-term use. It can be widely used in conferences and exhibitions, especially in control rooms that require long-term viewing.



Precise Color Management System

Using an accurate color management system, a secondary filtering display algorithm is added after the LED control system decodes the video, and each LED of the display is subjected to a 16-bit color correction point by point.



Handsome at Both Sides

The back cover is carefully designed in a compact but decent manner. The important features are ingeniously integrated in the backside including the XYZ adjustment mechanism. Nothing is scarified for AT's amazing 29mm depth.

Quick loading lock

Handle

Signal in socket

Front mounting holes ①②③④

Back mounting holes ⑤⑥⑦⑧



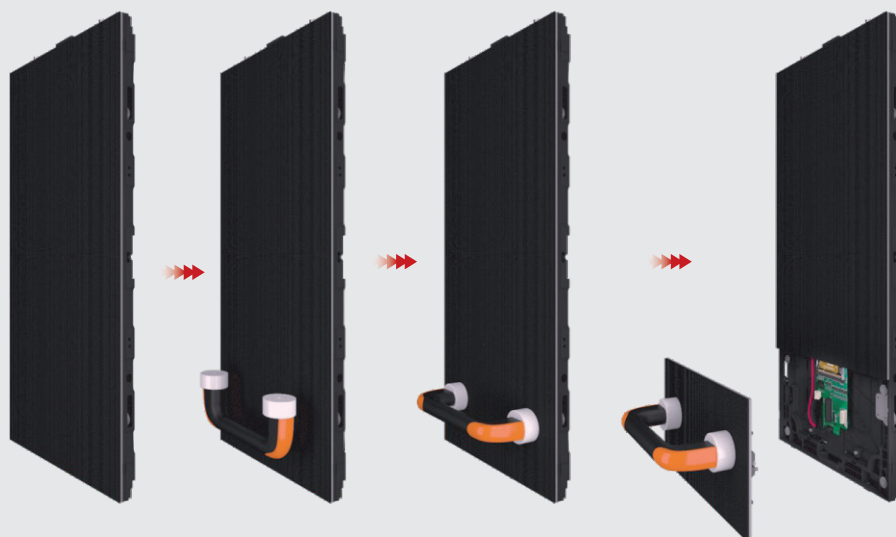


Efficient Mounting Structure

Front and rear mounting holes of the cabinet help to achieve quick installation, and the front and rear adjustment mechanism can ensure the flatness of the whole screen.

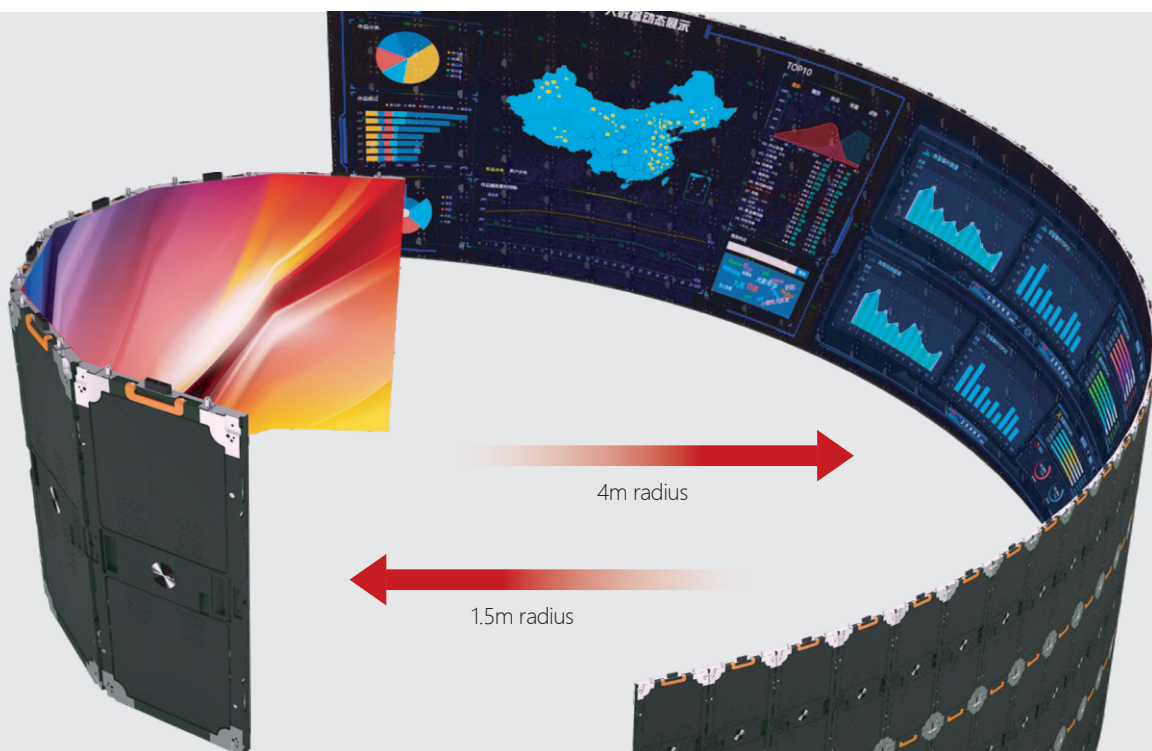


Front Maintenance





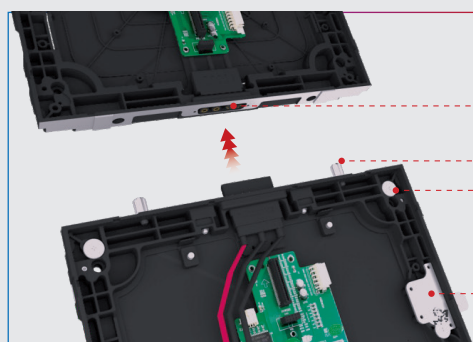
Curved Stitching & Immersive Interpretation



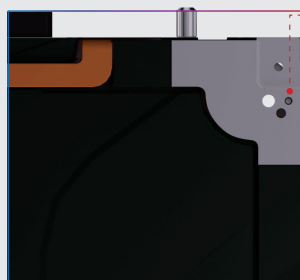
PRODUCT STRUCTURE



Cabinets are connected by locks, no connector



- Power and signal two-in-one interface
- Positioning pins
- Module front mounting iron piece
- Quick lock



- Front and rear adjustment

INSTALLATION



SPECIFICATION

Item	AT009	AT011	AT012	AT014	AT015	AT018	AT025	AT040
Pixel Configuration	SMD	SMD	SMD	SMD	SMD	SMD	SMD	SMD
Pitch(mm)	0.945	1.18	1.26	1.454	1.575	1.89	2.5	4
Module Resolution(WxH)	320x180	256x144	240x135	208x117	192x108	160x90	120x68	75x42
Module Size(mm)(WxH)	302.4x170.1							
Module Weight(Kg)	0.65	0.65	0.65	0.65	0.65	0.65	0.65	0.65
Module Composition(WxH)	1x4	1x4	1x4	1x4	1x4	1x4	1x4	1x4
Panel Resolution	320x720	256x576	240x540	208x468	192x432	160x360	120x272	75x168
Panel Dimension(WxHxD, mm)	302.4x680.4x29.5							
Unit Area(m²)	0.2058	0.2058	0.2058	0.2058	0.2058	0.2058	0.2058	0.2058
Panel Weight(Kg/m²)	27	27	27	27	27	27	27	27
Pixel Density(pixel/m²)	1119789	718184	629882	473111	403124	279947	158637	61256
Surface Flatness (mm)	≤0.5	≤0.5	≤0.5	≤0.5	≤0.5	≤0.5	≤0.5	≤0.5
Brightness Calibration	Yes	Yes	Yes	Yes	Yes	Yes	Yes	Yes
Color Calibration	Yes	Yes	Yes	Yes	Yes	Yes	Yes	Yes
Brightness(nits) (after calibration)	600~800	600~800	600~800	600~800	600~800	600~800	600~800	600~800
Color Temperature(K)	3000~10000 Adjustable							
Horizontal Viewing Angle(°)	160	160	160	160	160	160	160	160
Vertical Viewing Angle(°)	140	140	140	140	140	140	140	140
Deviation of LED Luminance Center (after calibration)	< 3%	< 3%	< 3%	< 3%	< 3%	< 3%	< 3%	< 3%
Brightness Uniformity	≥97%	≥97%	≥97%	≥97%	≥97%	≥97%	≥97%	≥97%
Chromaticity Uniformity (after correction)	± 0.003Cx,Cy within							
Max Power Consumption (W/m²)	650	650	620	620	600	600	600	600
Average Power Consumption (W/m²)	217	217	208	208	200	200	200	200
Power Supply	DC53.5V(48V~58V)							
Drive Mode	Constant Current Drive							
Frame Rate(Hz)	50&60	50&60	50&60	50&60	50&60	50&60	50&60	50&60
Refresh Rate(Hz)	3000/3840	3000/3840	3000/3840	3000/3840	3000/3840	3000/3840	3000/3840	3000/3840
Lifetime(hrs)	100,000	100,000	100,000	100,000	100,000	100,000	100,000	100,000
Operation Temperature (°C)	-10~40	-10~40	-10~40	-10~40	-10~40	-10~40	-10~40	-10~40
Storage Temperature(°C)	-20~60	-20~60	-20~60	-20~60	-20~60	-20~60	-20~60	-20~60
Operation Humidity(RH)	10--80% no condensation							
Storage Humidity(RH)	10--85% no condensation							

Remark: Above data is subject to change without prior notice