



Leyard LA Series

Outdoor Fixed Installation LED Display

Leyard® LA Series outdoor fixed installation LED displays feature a lightweight, thin, high-strength aluminum construction with a heat-resistant design that withstands harsh weather conditions and extreme temperatures. Both the display cabinets and modules are waterproof and feature an IP65 Ingress Protection Rating. The displays offer fully front or rear service maintenance making them ideal for DOOH advertising, billboards, building facades, sports venues and more.



Aluminum Structure
Lightweight and offers excellent heat dissipation



High Brightness
Visible in sunlight and improves outdoor visibility



Easy Maintenance
Front side installation with 100% front or rear service



Lower Consumption
Eco-friendly, and extends display lifespan

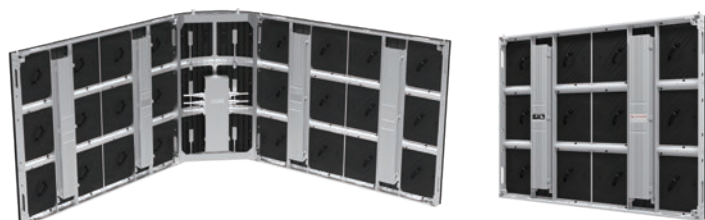


Curved Splicing
Curved cabinets for outdoor naked-eye 3D screen



2-Year Warranty
Leyard LED Standard Limited Warranty

- 4.4, 6.7 & 10mm pixel pitches
- Brightness up to 7500 nits
- Supports curves & right-angle splicing installations
- IP65 outdoor protection rating



High Brightness

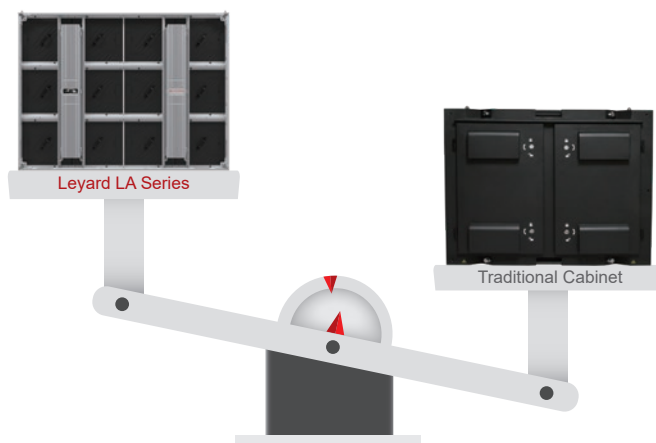
The high brightness outdoor video walls ensure vivid and clear image quality even in the bright sunlight.

- > Brightness up to 7500nits;
- > Lower power consumption than traditional cabinet.



Ultra-slim and Ultra-light

The aluminum panel is more than half as thin and 42% lighter than as traditional fixed LED displays, yet retains its hardness , greatly saving operation and labor costs.



28Kg/sqm
Ultra-light

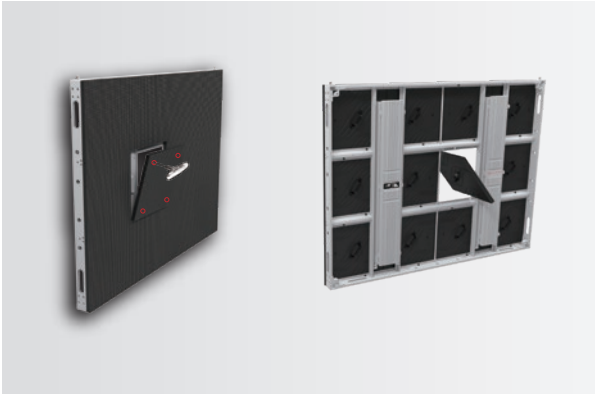
71mm
Ultra-slim

54% Thinner
Than traditional cabinet

42% Lighter
Than traditional cabinet

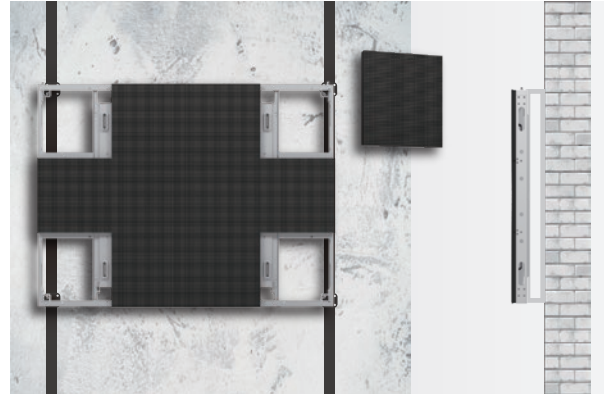
100% Front or Back Maintenance

The single electronics box is designed for fast, simple and efficient maintenance, unlike other video walls with several doors.



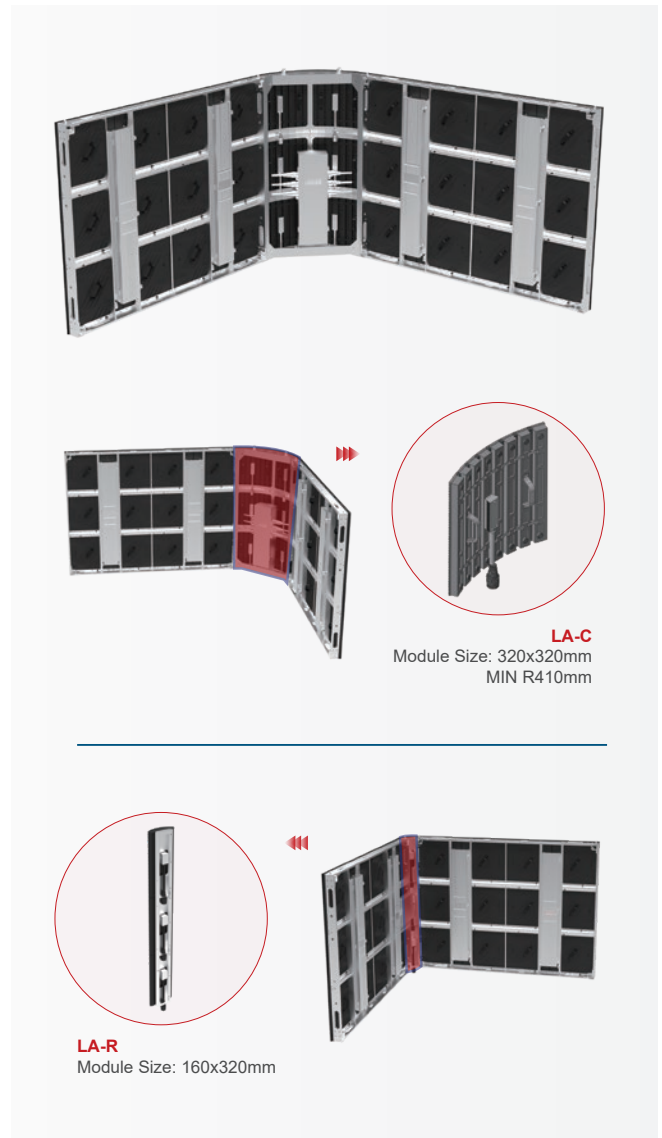
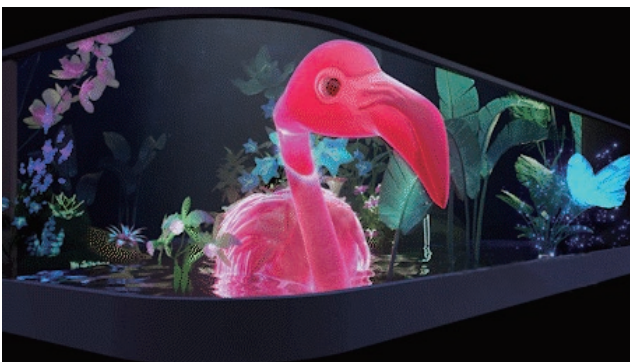
Front Side Installation

The display can be installed close to the wall to fit in multiple installation conditions.



Standard Curved Cabinet

Curved cabinets can be used for large outdoor naked-eye 3D LED screen projects.

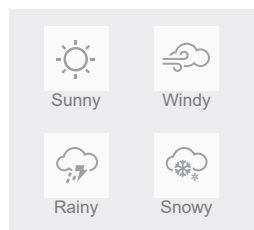


Leyard LA Series outdoor fixed LED displays are crafted for durability and high performance in exterior environments, offering consistent, high-quality visuals for commercial signage, retail, corporate signage, sports facilities and transportation. Leyard LA Series boasts excellent brightness and contrast, making it an optimal solution for impactful outdoor communication and entertainment.



All Weatherproof

- > Low temperature resistant design, working temperature is -30°C-60°C.
- > No internal cooling necessary, saving your operation cost.
- > Both the cabinet and the module are waterproof with an IP65 Ingress Protection Rating.



Specifications

Item	LA04S	LA06S	LA10S
LED Type	SMD	SMD	SMD
Pixel Pitch	4.44mm	6.67mm	10mm
Module Resolution (WxH)	72x72	48x48	32x32
Module Dimension (WxH)	320x320mm 12.6"x12.6"	320x320mm 12.6"x12.6"	320x320mm 12.6"x12.6"
Module Composition (WxH)	Standard: 4x3	Standard: 4x3	Standard: 4x3
Cabinet Resolution (WxH)	288x216	192x144	128x96
Cabinet Dimension (WxHxD)	Standard: 1280x960x71mm 50.39"x37.8"x2.8" (Optional: 1280X640mm 50.39"x25.2" / 640X960mm 25.2"x37.8" / 640X640mm 25.2"x25.2")		
Cabinet Area	Standard: 1.2288m ² 13.23ft ²		
Cabinet Weight	35kg 77.16lb		
Pixel Density (point/m ²)	50625	22500	10000
IP Level	IP65 Front/Rear	IP65 Front/Rear	IP65 Front/Rear
Brightness	6000nits	7500nits	7500nits
Color Temperature	3000 ~ 10000K Adjustable		
Viewing Angle	H 150° / V 110°	H 150° / V 110°	H 150° / V 110°
Deviation of LED Luminance Center	<3%	<3%	<3%
Contrast Ratio	6000:1	6000:1	6000:1
Power Consumption(max; avg)	720W/m ² ; 240W/m ²	790W/m ² ; 265W/m ²	790W/m ² ; 265W/m ²
Input Voltage	AC100~240V (50-60Hz)		
Installation	Front/Rear		
Maintenance	Front/Rear access		
Refresh Rate	≥3840Hz		
Frame Rate	50&60Hz		
Grey Level (bit)	14		
Operating Temperature	-30~60°C -22~140°F		
Storage Temperature	-40~70°C -40~158°F		
Operating Humidity	10~90%RH		
Storage Humidity	10~80%RH		
Warranty	2 years		
Certification	FCC, CB, cTUVus, CE, IC, ROHS, WEEE, REACH		